

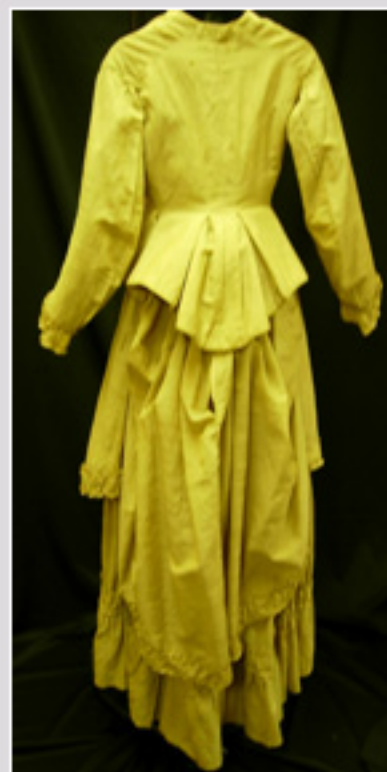
# FEATURED DONATION

DONATED BY JANE JACK OF MUNCIE, INDIANA



1875

Worn as a wedding dress by Elms Price Logan, donors great grandmother. The wedding took place in Indiana.



## The Bustle Period, 1870-1890

Silhouettes during this time period were modified continuously. The bustle experienced many changes throughout the years; gradually diminishing in size as the years progressed.

2 Piece garments consisting of matching bodice and skirt were the height of fashion during this period.

Bodices were usually jacket type garments, necklines were high and closed, sleeves were tight fitting and skirts were draped in the back for added fullness. Day dresses tended to be less ornate than evening dresses, necklines and sleeves were also cut differently.