

AW ARTWORDS

a newsletter for the Friends of the David Owsley Museum of Art

SPRING 2020

Vol. 25 | No. 2

**IN THIS ISSUE: MEXICAN MODERNITY,
PROGRAM CALENDAR, NEW TO THE COLLECTION**

**DAVID
OWSLEY
MUSEUM** OF
ART BALL STATE
UNIVERSITY





ARTWORDS

David Owsley Museum of Art

SERVING EAST CENTRAL INDIANA SINCE 1936

FRIENDS ADVISORY COUNCIL

Mary Foster, *Vice Chair*
Jim Gooden, *Chair*
Ann Johnson
Sigrid Koehler-Wilkins
Sandra McCallister, *Secretary*
Karen Moorman
Joe Trimmer
Sue Whitaker
Jeanne Zeigler

Ex officio

Seth Beckman, *Dean, College of Fine Arts*
Rachel Buckmaster, *Assistant Director, DOMA*
Robert G. La France, *Director, DOMA*
Jan McCune, *President, DOMA Alliance*
Karen Vincent, *President, Muncie Art Students' League*

MUSEUM STAFF

Robert G. La France, *Director*
Rachel Buckmaster, *Assistant Director*
Tania Said, *Director of Education*
Denise Mahoney, *Registrar and Collection Manager*
Noelle Giuffrida, *Assistant Curator of Asian Art*
Randy Salway, *Exhibition Designer & Preparator*
Cathy Bretz, *Education Program Coordinator*
Jordan Huffer, *Staff Photographer*

WRITERS

Rachel Buckmaster (RB)
Noelle Giuffrida (NG)
Robert G. La France (RGL)
Denise Mahoney (DM)
Tania Said (TS)

DESIGN

Aubrey Smith Creative

COVER ART

Diego Rivera, Mexican (1866 - 1957)

Girl with Flowers (Niña con flores), 1954, watercolor on rice paper, Collection of Dr. Zapanta. © 2019 Banco de Mexico Diego Rivera Frida Kahlo Museums Trust, Mexico, D.F. / Artist Rights Society (ARS), NY.

ARTwords is published biannually by the David Owsley Museum of Art at Ball State University, Muncie, Indiana ©2020. All rights reserved



LETTER FROM THE DIRECTOR

This Spring semester, the David Owsley Museum of Art focuses on Mexican art and culture. The main exhibition, *Mexican Modernity: 20th-Century Paintings from the Zapanta Collection*, celebrates the flowering of the arts in Mexico. It underlines the contributions of major players and movements including the early masters, the Three Great Mexican muralists, the second generation of muralists, women artists, the Rupture generation, and the artists of Oaxaca. In addition, DOMA has curated an adjunct exhibition that reveals the impact of Mexican modernism in the United States and Muncie's connection to artists in the colonial town of Taxco, Mexico. The exhibition provides an opportunity to underline Mexico's contribution to modern art with a display and bilingual Spanish-English catalogue that will

interest faculty and students in a variety of fields of study at Ball State. The associated programming is also designed to appeal to schoolteachers and schoolchildren in the region, with an educator overview and Spanish language tours for high school students. In addition, DOMA is offering a public presentation about *Mexican Modernity* by Gregorio Luke, the former director of the Museum of Latin American Art in Long Beach, Consul of Cultural Affairs of Mexico in Los Angeles, California, and First Secretary of the Embassy of Mexico in Washington, DC, at the annual Edmund F. Petty Lecture on March 12 at 6pm. What is more, on Friday, April 17 at 6pm, DOMA is hosting an interactive performance in partnership with Ball State University's Department of Theater and Dance. *Frida: A Fertile*

Existence explores Mexican artist Frida Kahlo's work through interpretations by contemporary theater artists Veronica Santoyo and David Little.

Regular programs at DOMA continue this semester with Final Friday PechaKucha talks on the themes of bridges and borders on March 27 and April 24 from 6 - 9 pm; Meditation in the Museum on most Friday afternoons at 3pm; and Docent's Choice Tours on most Saturdays at 2:30pm. Kindly consult the calendar in this issue for details. We also encourage you to join the Alliance in order to attend our monthly lunch presentations, special tours, and trips.

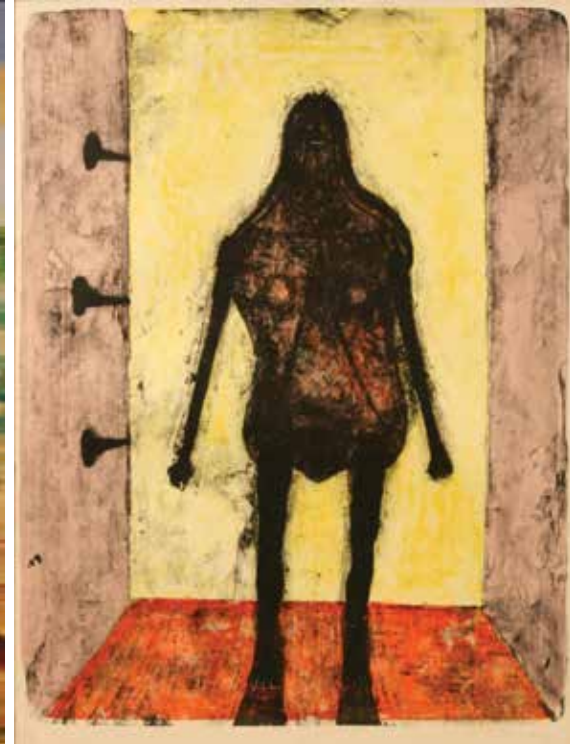
Experience all that there is to see and do at East Central Indiana's gateway to the world of art!

RGL

▼ **Raúl Anguiano, Mexican (1915 - 2006),**
The Thorn (La espina), 2002, oil on canvas,
 Collection of Dr. Zapanta. Courtesy of
 Brigita Anguiano.



▼ **Rufino Tamayo, Mexican (1899 - 1991),**
Venus (Venus negra), 1968, lithograph,
 Collection of Dr. Zapanta. © 2019 Tamayo
 Heirs / Mexico / Licensed by VAGA at
 Artists Rights Society (ARS), NY.



▲ **Federico Cantú, Mexican (1907 - 1989),**
Farewell (La despedida), n. d., Gouache on paper,
 Collection of Dr. Zapanta.



▲ **Leonora Carrington, British (1917 - 2011),**
Tuesday, state II (Martes, estado II), lithograph,
 Collection of Dr. Zapanta. © 2019 Leonora
 Carrington /
 Artists Rights Society (ARS), New York.

▶ **Rafael Coronel, Mexican (1931 - 2019),**
Street Performers II (Carperos II),
 1980, oil on canvas,
 Collection of Dr. Zapanta.



jan 30 - may 03
EXHIBITION

Regular museum hours:
Monday-Friday, 9 am - 4:30 pm;
Saturday-Sunday, 1:30 - 4:30 pm

MEXICAN MODERNITY:

20TH-CENTURY PAINTINGS FROM THE ZAPANTA COLLECTION

Mexican Modernity: 20th-Century Paintings from the Zapanta Collection provides an overview of artistic styles and a consideration of significant themes, political events, and social narratives that informed the creative output of several generations of modern Mexican artists. The paintings, drawings, and prints on display represent not only Los Tres Grandes (The Three Greats) of Mexican mural painting, José Clemente Orozco, Diego Rivera, and David Alfaro Siqueiros, but also Rufino Tamayo, Francisco Zúñiga, and several artists from subsequent generations, including Frida Kahlo and Leonora Carrington. An illustrated catalog, written in both English and Spanish, accompanies the exhibition.

Dr. Richard Zapanta was a fourth-generation Mexican-American who amassed an art collection over more than 25 years as a way to reconnect with his cultural roots. Dr. Zapanta and his widow Rebecca established close friendships with many of the artists they collected, such as Rodolfo Morales and Raúl Anguiano, often inviting them to their home in California and spending time with them in Mexico. The exhibition was organized by the Cornell Fine Arts Museum at Rollins College in Winter Park, Florida, and will subsequently travel to the McClung Museum of Natural History and Culture at the University of Tennessee, Knoxville.



The exhibition at Ball State University is complemented by a presentation of works from the David Owsley Museum of Art's collection as well as significant loans that highlight Mexican artists' impact on the United States and East Central Indiana, including a rare set of vintage photographs of Frida Kahlo in New York, Mexico, and at the U.S. border by Manuel Álvarez Bravo, Imogen Cunningham, Edward Weston, and others. This companion exhibition incorporates works on paper by Rivera and Siqueiros collected by the Ball family and spotlights the Indiana painters Carolyn Bradley and Howard Leigh, who were inspired by the imagery, history, culture, and people of Mexico.

In addition, Gregorio Luke, a renowned specialist on Mexican art and former director of the Museum of Latin American Art in Long Beach, California, will present the Edmund F. Petty Memorial Lecture about the exhibition on Thursday, March 12. Luke has researched the Zapanta Collection extensively and written *Mexican Modernity's* illustrated catalogue, which will be available for purchase at the museum throughout the semester.

RGL

PROGRAM CALENDAR

FEB

EDUCATOR AND FRIENDS OVERVIEW
Monday, 4 pm

03

Ball State faculty, area schoolteachers, and DOMA Friends members are invited to enjoy

a private tour of the exhibition *Mexican Modernity* with Dr. Robert La France, DOMA's director.

One CEU available for K-12 teachers. Space is limited; register and pay online at bsu.edu/doma/exhibitions: Free for Friends members, Ball State faculty, and MCS teachers and administrators; \$5 for other educators

FEB

20TH-CENTURY MEXICAN ART IN REVIEW

Sunday, 2:30 pm

09

Join Dr. Michelle Duran, assistant professor of art, Ball State University

School of Art, who will lead a tour of the exhibition based on her research on modern Mexican painting and popular arts.

FEB

ALLIANCE LUNCHEON AND PROGRAM
Wednesday, 12 noon

12

"Stone, Clay, Lacquer, and Fungus: Materials and Meanings in Asian Art"

Join Dr. Noelle Giuffrida,

DOMA's assistant curator of Asian art and assistant professor of Asian art in the School of Art, for a talk that explores connections between materials and meanings through a selection of Asian objects from DOMA's collection.

Register at bsu.edu/doma/alliance by February 7.

First-time guests free; \$20 for Alliance members.

Alumni Center

FEB

EXPRESS TALK: AFRICAN AMERICAN ARTISTS
Wednesday, 12 noon

19

Join Denise Mahoney, collection manager and registrar, for a short

conversation about current works on view in honor of Black History Month in the Contemporary Craft Gallery.

FEB

MEXICAN MODERNITY FOR HIGH SCHOOLERS
Wednesday, 10 am - 2 pm

26

In collaboration with teens and teachers, high school students will explore the special exhibition *Mexican Modernity* in Spanish and/or English.

High school art and Spanish teachers contact Cathy Bretz, education coordinator, cbretz@bsugmail.net to reserve space for your class. Open to homeschoolers, too. Space is limited.

FEBRUARY 29 - MARCH 8

DOMA will be closed to the public for Spring Break.

MAR

FINAL FRIDAY: BRIDGES
Friday, 6 - 9 pm

27

Enjoy museum late hours for viewing the collection and special exhibition, PechaKucha talks with local emcees, an artist

demonstration, music with DJ Jannell, refreshments, cash bar, and more.

APR

ALLIANCE LUNCHEON AND PROGRAM
Wednesday, 12 noon

08

"Using the Lens of Japanese Ceramics to Appreciate Native Clays"

Judy Wojcik, associate

professor of art at Earlham College in Richmond will compare ceramics from various regions of Japan in DOMA's collection to the work of potters in the United States who seek an aesthetic honesty to materials, processes, and the environment.

Register at bsu.edu/doma/alliance by April 3.

First-time guests free; \$20 for Alliance members.

Alumni Center

MAR

ALLIANCE LUNCHEON AND PROGRAM
Wednesday, 12 noon

11

"Making Public Places into Social Spaces with Public Art" Join Braydee Euliss, former executive director,

Muncie Arts & Culture Council, and become more informed and engaged with Muncie's public art initiatives.

Register at bsu.edu/doma/alliance by March 6

First-time guests free; \$20 for Alliance members.

Alumni Center

MAR

EDMUND F. PETTY MEMORIAL LECTURE: GREGORIO LUKE ON MEXICAN MODERNITY

12

Thursday | Reception: 5 pm, Program: 6 pm

Join Gregorio Luke,

an expert on Mexican and Latin American art and culture, for a lecture about the spring exhibition.

APR

SMART ARTS CELEBRATION
Wednesday, 6 - 8 pm

08

Students from the School Museum Art Readiness Tour program and their families will celebrate with an

exhibition of their drawings, music, and a unique interactive experience with Ball State dance majors.

All are welcome for this free event.

In collaboration with the Back to School Teachers

Store, Ball State Department of Theatre and

Dance, and Muncie Community Schools



◀ Gregorio Luke

SPRING 2020



program CALENDAR

APR

15

EXPRESS TALK: ART BY ASIAN PACIFIC AMERICAN ARTISTS Wednesday, 12 noon

Join Denise Mahoney, collection manager and registrar for a short conversation about current works on view in honor of Asian Pacific American Heritage Month in the Contemporary Craft Gallery.

APR

17

FRIDA: A FERTILE EXISTENCE Friday | Performance: 6 pm, Reception: 7 pm

Enjoy an interactive performance that explores acclaimed Mexican artist

Frida Kahlo's work and personality through the eyes of contemporary theater artists Veronica Santoyo and David Little, assistant teaching professors from the Ball State Department of Theater and Dance. A reception will follow the program.

APR

24

FINAL FRIDAY: BORDERS Friday, 6 - 9 pm

Enjoy museum late hours for viewing the collection and special exhibition, PechaKucha talks with local emcees, an artist demonstration, music with DJ Jannell, refreshments, cash bar, and more.

MAY

13

ALLIANCE TRIP Wednesday, 7:45 am - 5:30 pm

Exploring the Eskenazi Museum of Art at Indiana University

Call (765) 285-5242 or visit bsu.edu/doma for more information. Payment includes transportation, lunch, admission, tours, and additional support for DOMA.

\$100 for Alliance member; \$125 for Friends members (includes Alliance membership);

\$150 for the public (includes Alliance membership)

MAY

15 - 17

ART IN BLOOM Friday - Sunday

Art in Bloom is an annual springtime event celebrating the David Owsley Museum of Art through innovative floral interpretations

by the region's top designers. The Friday evening opening reception is a fundraiser supporting the museum's programs and acquisitions. Floral designers display their creations for the public with free admission throughout the following weekend. This year's gala will coincide with the opening of the exhibition Morgan Everhart: Flesh and Bloom. Visit bsu.edu/doma for more information or to purchase tickets for the fundraiser.

Meditation in the Museum

Most Fridays at 3 pm in the Owsley Ethnographic or Asian Art Galleries.

Visit bsu.edu/doma/events for dates and topics.

Museum Hosts Available on most Saturdays at 1:30 pm

Docents answer your questions and provide an overview of the museum every day a Docent's Choice tour is offered.

DOCENT'S CHOICE TOURS

Most Saturdays at 2:30 pm

Docents present a thematic, cross-cultural conversational tour allowing for visiting several galleries at the same time.

January 25 - Global Tour—General Introduction to the Art of the Americas, Africa, Asia, Mediterranean, and Pacific

February 1 - New Beginnings: Art of Birth

February 8 - You Can't Take It with You: Funerary Art

February 15 - I Do: Rites of Love and Marriage

February 22 - Mexican Modernity exhibition (in Spanish and English)

February 29 and March 7 - No Docent's Choice Tour due to Spring Break

March 14 - Bejeweled and Bedecked: Art of Personal Adornment

March 21 - Powerful Beliefs: Religious Art

March 28 - Pushing Boundaries: Art by Women (including the special exhibitions)

April 4 - Preserving Stories: Folklore and Fables in Art

April 11 - Carving Across Cultures: Art from Wood and Stone

April 18 - The Four-legged and the Fantastic: Animals in Art

April 25 - Mexican Modernity exhibition (in English)

Join the Friends of DOMA

with a minimum contribution of \$25 at bsu.edu/doma/friends, or call 765-285-5242.

JOIN THE DOMA ALLIANCE

Minimum annual contribution of \$50. Larger donations are encouraged to support exhibitions, acquisitions, and conservation at the museum. If you wish to attend an Alliance meeting, call 765-285-5242 or register online at bsu.edu/doma/alliance.

ACCESSIBILITY ACCOMMODATIONS

Visitors requiring accessibility accommodations should contact the David Owsley Museum of Art at least two weeks before the program whenever possible.

GROUP TOURS

Free tours are available for groups of 7 or more. Contact Cathy Bretz, education coordinator, cbretz@bsu.edu for more information.

SCHOOL TOUR PROGRAM

Request SMART (School Museum Art Readiness Tours) program information for fourth grade students or other school tour information from Tania Said, director of education, tsaid@bsu.edu.

PARKING ACCOMADATIONS

Parking is available in the McKinley Avenue garage between Riverside and University Avenues; at two reserved spaces on Campus Drive in the Quad near the Beneficence statue (please retrieve a free hang tag from the front desk); and only drop off is permitted at the museum's north entrance in the Circle Drive on Riverside Avenue.

Programs, correct, at press time, are subject to change without notice. Call ahead to confirm, 765-285-5242.

All programs are at DOMA and free unless otherwise noted.



▲ **Top:**
Amy Frye and Sephora Mentado Frame a Shot at DOMA (photo by Jordan Huffer)

▲ **Bottom Two:**
Stills from *Impressions of Love* (with Rachel Berenson Perry) and *Entering Gorey's Worlds* (with Erin Monroe)

THE BONA PRESS

FILM SERIES

Interested in a new way to enjoy perspectives on DOMA's collection and exhibitions? Anyone with a laptop can do just that—from home—through a unique collaboration between the museum and the College of Communication Information and Media (CCIM)! Capitalizing on DOMA's academic setting and engaging exhibitions, a new assistantship is producing informative and beautiful short films while at the same time providing valuable professional development for the graduate student recipient.

The annual graduate assistantship funds a student in CCIM who creates a video documentary on a topic related to DOMA's collection, exhibitions, and history. This project was made possible by the generous support of, and is named for, Bona Dillon Press, a Ball State alumna and accomplished journalist who created this assistantship with her husband, Larry Press. After just one year, two documentaries on recent exhibitions are now available to view: *Entering Gorey's Worlds* and *Impressions of Love*. Both were created by CCIM graduate student Amy Frye. "I've enjoyed learning about

the artists as I interviewed experts and edited the documentaries," says Frye. "I'm not well-versed in the art world, so having the opportunity to learn about Edward Gorey and the Adamses as I figured out how to tell their stories was a great experience."

In serving as the academic support for the immersive assistantship, DOMA provides an opportunity for creative expression as well as tangible, transferrable skills for an emerging communications professional. Says Frye, "These films were my first opportunity to direct a documentary, versus a short film with a script. I enjoyed the process of shaping the narrative in the edit. It's been a learning process, but also a lot of fun."

In addition to the completed features on the exhibitions *Gorey's Worlds* and *Impressions of Love*, upcoming films will include a profile of the entire College of Fine Arts and the museum's SMART program. These films can be viewed online by simply clicking on the "videos" link on our website at [bsu.edu/doma](https://www.bsu.edu/doma).

RB



DR. NOELLE GIUFFRIDA
JOINS DOMA

Dr. Noelle Giuffrida joined Ball State in Fall 2019 in a joint position as assistant curator of Asian art and assistant professor of Asian art through a partnership between DOMA and the School of Art.

Giuffrida's teaching and curatorial experience extend broadly both temporally—from Neolithic to contemporary—and cross-culturally to China, Korea, and Japan, as well as to South and Southeast Asia. Her research focuses on Chinese art, particularly the history of collecting and exhibiting pre-modern works in American museums after World War II and the visual culture of Daoism in late imperial China. Her first book *Separating Sheep from Goats: Sherman E. Lee's Collecting of Chinese Art in Postwar America* (University of California Press, 2018) demonstrates her strong interest in collecting and museums. Giuffrida has traveled extensive-

ly for her research throughout Asia.

Giuffrida, a native of Washington, DC, previously taught in the joint graduate program between the Cleveland Museum of Art and Case Western Reserve University. Her curatorial work includes projects in Cleveland as well as for the Philadelphia Museum of Art and the Ringling Museum of Art. She earned her PhD from the University of Kansas, with an MA from the University of Wisconsin, and a BA from Vassar College.

In her first month, Giuffrida was instrumental in vetting Asian art for the Recent Acquisitions exhibition. Next semester she will teach Buddhist Arts of Asia and Arts of Japan for the School of Art. Plan to attend *Stone, Clay, Lacquer, and Fungus: Materials and Meanings in Asian Art*, her Alliance talk to members on Wednesday, November 12, at 12 noon.

TS

MARK YOUR CALENDAR • MARK YOUR CALENDAR

ONE BALL STATE DAY

2020

On April 9, 2019, Ball State University raised nearly \$500,000 in a 24-hour time period to celebrate the first One Ball State Day fundraising event. Students, staff, alumni, and friends of the university made donations from \$5 to over \$1000, mainly online, to their choice of a variety of areas across the school, with the DOMA Friends fund being one of them.

The next One Ball State Day will be Tuesday, April 7, 2020, and DOMA is excited to take part again. We hope to surpass last year's \$3,122 raised with a goal of reaching \$5,000, and we are looking to our many generous friends to help meet or exceed this amount! While our small staff

prevents us from pulling out all the stops that the Departments of Athletics or Theater and Dance (2019's #1 and #2 rank, respectively, in dollars raised) are able to do, promotion-wise, we have some good plans up our sleeve. Starting in February, look for postings on our social media outlets (Facebook, Instagram, and Twitter) to remind everyone of the One Ball State Day in April, to share fundraising ideas (challenge grants anyone?), and to let everyone know how these greatly valued gifts to the Friends fund will be used.

**Please mark your calendar for
April 7, 2020!**

DM



ARTWORDS

a newsletter for the Friends of the

**DAVID
OWSLEY
MUSEUM** OF
ART BALL STATE
UNIVERSITY

Muncie, IN 47306-0420

Spring 2020

Vol. 25 | No. 2

Museum Hours

Monday-Friday: 9:00 a.m.-4:30 p.m.

Saturday & Sunday: 1:30 p.m.-4:30 p.m.

FREE ADMISSION

2021 W. Riverside Avenue

Muncie, IN 47306

bsu.edu/doma

765-285-5242

Follow DOMA on social media



◀ **Jizo Bosatsu, about 1670**

Japan, Edo Period (1603 - 1868)
Wood with lacquer, color, gold, and inlaid crystal eyes

Gift of David T. Owsley via the Alconda-Owsley Foundation
2019.016.001

New to the Galleries

JIZŌ BOSATSU

Jizō is an enlightened being known as a bodhisattva (Japanese: *bosatsu*) who vowed to postpone attaining nirvana and Buddhahood in order to save all sentient beings trapped in the tortuous realms of hell.

Unlike other bodhisattvas who resemble Indian princes with long hair and lavish clothing, Jizō appears in the guise of a young monk with a shaven head and wearing a traditional outer robe (*kesa*) featuring a patchwork design that recalls the historical Buddha's simple garment. Jizō holds a metal staff with six rings that refer to the six realms of existence. The sounds of the metal rings as the staff strikes the ground are believed to dispel people's deluded thoughts and announce the deity's presence. The orb in Jizō's left hand is a wish-granting jewel that lights his journeys through the dark infernal realms. The figure's gentle face combined with his crystal eyes and traces of gilding combine to present an enlivened compassionate savior. Devotees made offerings and conducted rituals aimed at securing Jizō's help in rescuing their deceased relatives from hell.