



# Annual Report 2015–2016

DAVID OWSLEY  
MUSEUM OF ART

BALL  
STATE  
UNIVERSITY

## DAVID OWSLEY MUSEUM OF ART STAFF



(Clockwise) Robert G. La France, Shannon Bryan, Rebecca Vaughn, Randy Salway, Rachel Buckmaster, Cathy Bretz, and Tania Said

## FROM THE DIRECTOR

In 2015–16, the staff at the David Owsley Museum of Art (DOMA) continued to build on success. We furthered the university's goal of becoming more student focused by establishing a new record for student visits. We also increased the museum's reach to host K-12 school groups from 14 different Indiana counties. And we offered a wide variety of exhibitions of both regional and global art paired with exciting events.

DOMA's impact is demonstrated throughout this report in charts, images, and text. What a report can't show, however, is how first-hand experiences of art through the permanent collection, exhibitions, and events can change public attitudes and awaken students' minds. In 2015-16, a dedicated director of education (Tania Said) and education program coordinator (Cathy Bretz) enabled encounters between visitors and art, aided by a docent corps of 29 community members and students that registered 1,088 hours of volunteer work.

As in previous years, in 2015-16 DOMA experienced a period of growth fueled by David T. Owsley's many donations, long-term loans, and promised endowment. To these treasures, we must add significant gifts by a variety of donors, including the museum's Benefactors, sponsors of the annual fundraising event *Art in Bloom*, and the Friends of the Museum, whose generosity enriches cultural life at Ball State University and in the city of Muncie.

A modest expansion of the museum staff, through the addition of a registrar and collection manager (Rebecca Vaughn) as well as an administrative coordinator (Shannon Bryan) helped the museum to manage a backlog of acquisitions and an increase in events. The recent hire of an assistant director (Rachel Buckmaster) now permits the museum to operate at a new level on par with its peer group.



2015–16 introduced a full cycle of exhibitions installed by DOMA's trusted exhibition designer and preparator (Randy Salway). Two shows in the fall of 2015 featured local curators and selections from the museum's collection. The first, *With Watercolor: Content via Technique*, was guest curated by artist Brian Gordy, who illustrated the elements of transparent watercolor painting with examples and through a live artist demonstration to a full house in Recital Hall. In the second, Prof. Sawrie provided insights into DOMA's photography collection and employed the exhibition as a teaching tool for Ball State University students.

In the spring of 2016, the exhibition *1 in 3: What Does It Take for You to Be Outraged?* from the World Bank Art Program in Washington D.C. marked a new collaboration between DOMA and an international art-collecting institution. The exhibition displayed works created by contemporary, emerging artists from around the globe that confronted the worldwide epidemic of gender-based violence.

Accompanied by a presentation by Curator Marina Galvani and two performances of the one-act play *Neda Wants to Die*, the exhibition and programming opened up new avenues for engagement with students from the Multicultural Center and Women's and Gender Studies, faculty in disciplines ranging from sociology to studio art, and community groups, from shelters to the Islamic Center of Muncie.

Today, as in 2015–16, DOMA's goal is to educate, connect, and engage with students, faculty, and community as a gateway to the world of art.

Sincerely,



Robert G. La France  
Director

## MISSION STATEMENT

The David Owsley Museum of Art cultivates lifelong learning and recreation in the visual arts through its collection of original works of art, engaging exhibitions, and educational programs for the university community and other diverse audiences.

As adopted by the Ball State University Board of Trustees; December 19, 2008

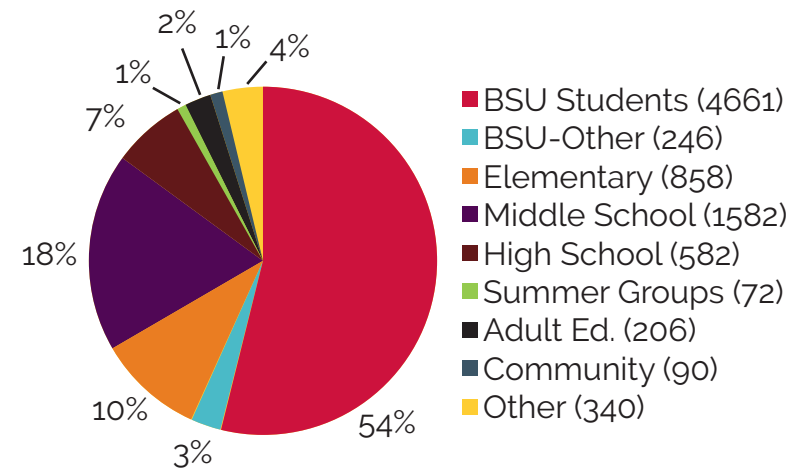
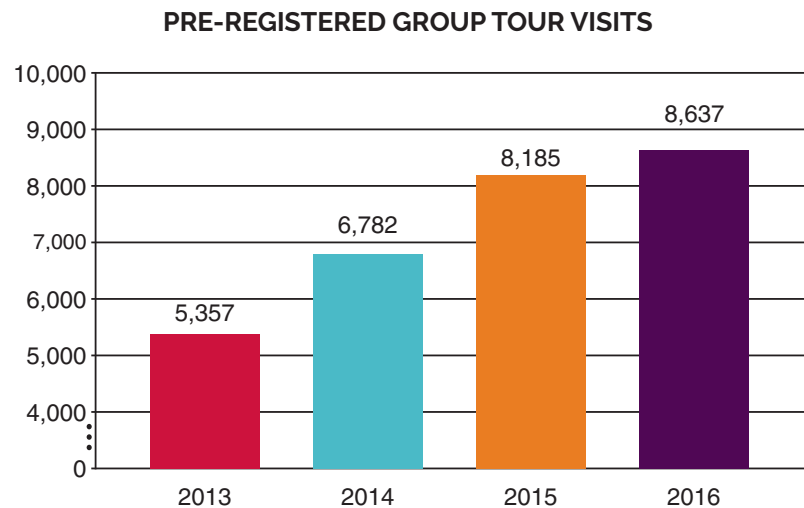
## ABOUT THE DAVID OWSLEY MUSEUM OF ART

The David Owsley Museum of Art is an 80-year-old university art museum that houses a world art collection with over 11,000 objects representing civilizations from six of the seven continents. DOMA balances exciting contemporary and historical art exhibitions with engaging displays of the permanent collection in a rich, educational environment that serves both the university and the East Central Indiana region.



## EDUCATION AND OUTREACH

In order to fulfill its educational mission, DOMA has become increasingly student-focused and improved engagement with both Ball State University students and Indiana K-12 schools. In the academic year 2015-16, 8,637 people (mostly students) visited in 247 groups, establishing a new record.



More than half (4,661) of group visits were by Ball State University students attending tours guided either by DOMA's staff and docents or led by Ball State University professors. In addition, Ball State University students account for thousands more individual visits that cannot be accurately separated from the museum's total attendance.

Indiana K-12 student visits also reached a new record in 2015-16:

- A total of 3,022 Indiana K-12 students visited for pre-registered school group tours in 2015-16, representing a total increase of 1,388 (46%) over the previous year.
- 2,307 Indiana K-12 students visited the museum for tours led by DOMA staff and docents, an increase of 989 over last year.
- 715 Indiana K-12 students visited the museum for tours led by a teacher, an increase of 417 over similar "self-guided" visits last year.

In 2015-16, students from 28 schools in 14 Indiana counties visited the museum, extending Ball State University's educational impact by attracting several public and private K-12 schools for the first time.



## SCHOOLS

Burris Laboratory School  
 Indiana Academy  
 East Washington Academy  
 Grissom Elementary  
 Mitchell Elementary School  
 Muncie Central High School  
 Northside Middle School  
 Delta Middle School  
 Jay County High School  
 Eastbrook High School  
 Frankton High School  
 East Elementary School\*  
 Riverview Middle School  
 Monroe Central Elementary  
 Northside Elementary School  
 Tri Senior High School  
 Knightstown High School\*  
 Riley Elementary School\*  
 Sand Creek Intermediate School\*  
 Avondale Meadows Academy\*  
 Charles Fairbanks Elementary\*

## DISTRICT, COUNTY

Ball State University, Delaware  
 Ball State University, Delaware  
 Muncie Community Schools, Delaware  
 Muncie Community Schools, Delaware  
 Muncie Community Schools, Delaware  
 Muncie Community Schools, Delaware  
 Muncie Community Schools, Delaware  
 Delaware Community Schools, Delaware  
 Jay School Corporation, Jay  
 Eastbrook Community Schools, Grant  
 Frankton-Lapel Community Schools, Madison  
 South Madison Community Schools, Madison  
 Huntington Community Schools, Huntington  
 Monroe Central School Corporation, Randolph  
 Blackford County Schools, Blackford  
 South Henry Corporation, Henry  
 Charles A. Beard Corporation, Henry  
 New Castle Community Schools, Henry  
 Hamilton Southeastern Schools, Hamilton  
 Public Charter School, Indianapolis, Marion  
 Indianapolis Public Schools, Marion

Hoosier Academies M.S.\*  
 St. Mary's Catholic School  
 Whitewater Career Center\*  
 Anderson Elementary School\*  
 Anderson High School\*  
 Highland Middle School  
 Manchester Intermediate School\*

Virtual Charter School, Marion  
 Private School, Rush  
 Fayette County School Corporation, Fayette  
 Anderson Community Schools, Madison  
 Anderson Community Schools, Madison  
 Anderson Community Schools, Madison  
 Manchester Community Schools, Wabash

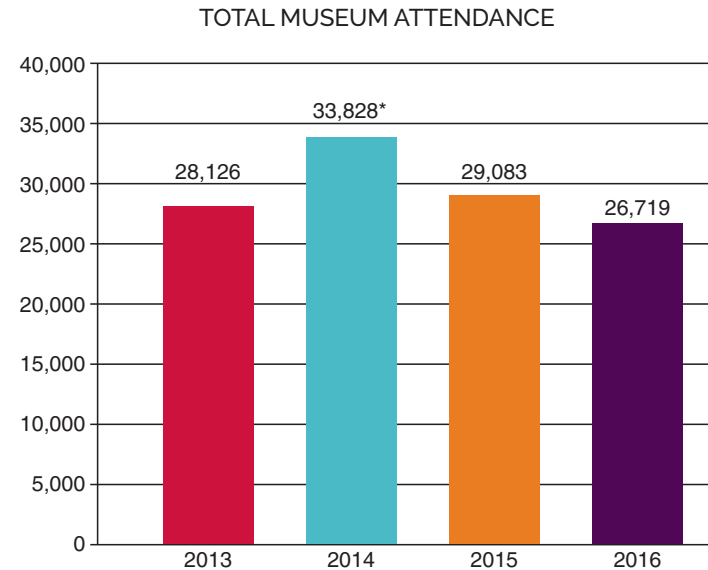
*\*First recorded visit to DOMA*





## ATTENDANCE

While student visits increased in 2015-16, total museum attendance decreased slightly from the previous year. Neither fiscal year (FY) 2015 nor FY2016 rivaled the museum's high attendance in FY2014, the year of the reopening after a major expansion, which was accompanied by a marketing campaign. The minor decrease in FY2016 reflects a national trend of reduced visits to many art museums outside of major cities, and can hopefully be reversed through a more aggressive marketing strategy. Budget restrictions may limit marketing efforts to social media and other low-cost approaches to spreading the word about the museum's major virtues: free admission and an encyclopedic collection of global art.

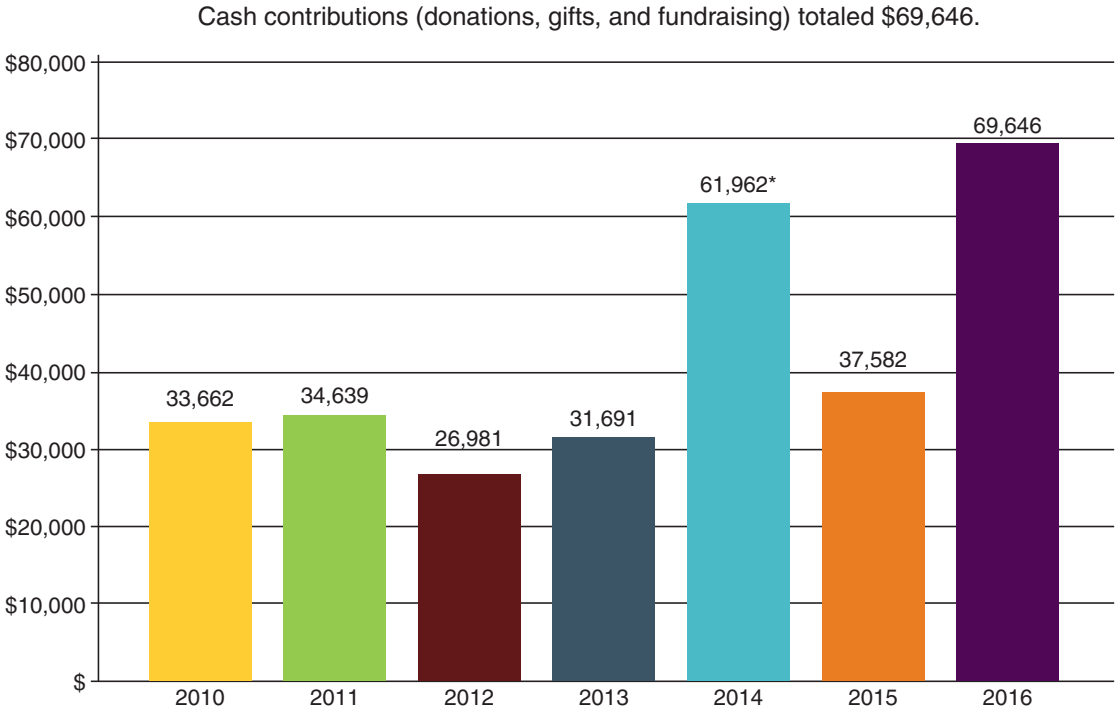


\*FY2014 includes attendance for the grand reopening of the galleries in the fall of 2013.





**FY2016 FINANCIAL SNAPSHOT (unaudited)**



*\*Includes donations for 2013 reopening gala*

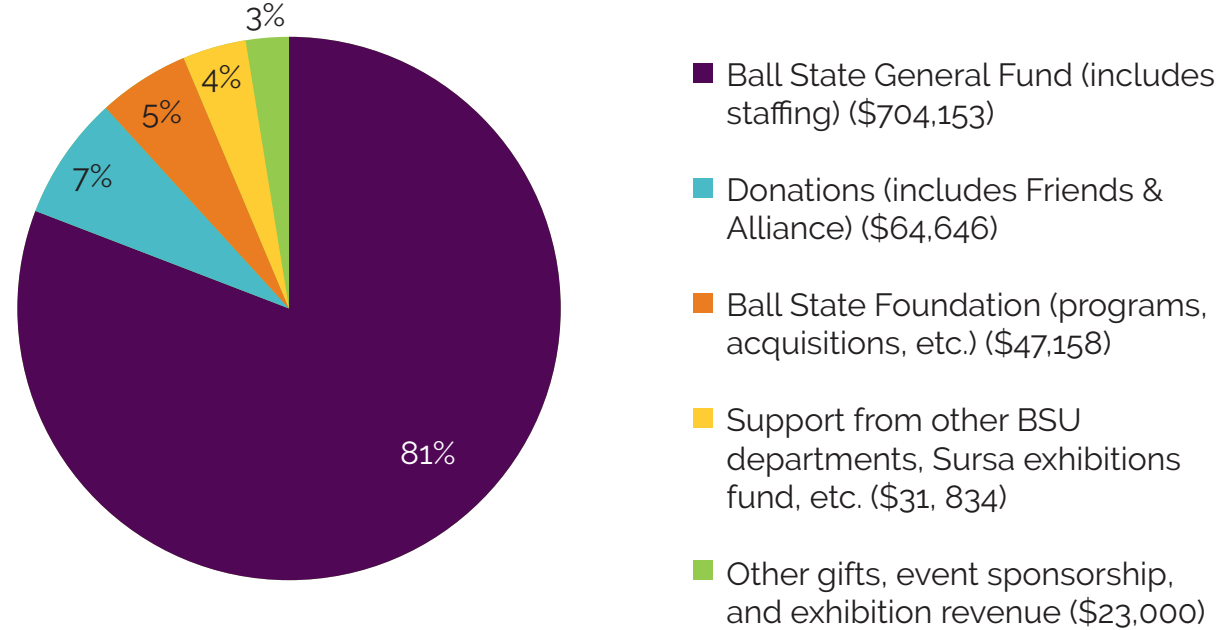
In fiscal year 2014-15, DOMA achieved a new record for cash contributions. Major donors and support groups, such as the Benefactors and Friends of the Museum, helped to lift the total to nearly \$70,000. The successful second annual *Art in Bloom* fundraising event alone netted over \$10,000 for programs, acquisitions, and conservation projects.

The effective management of expenses has permitted the museum to expand the size and scope of exhibitions and related programs, maximizing the impact of philanthropic support.

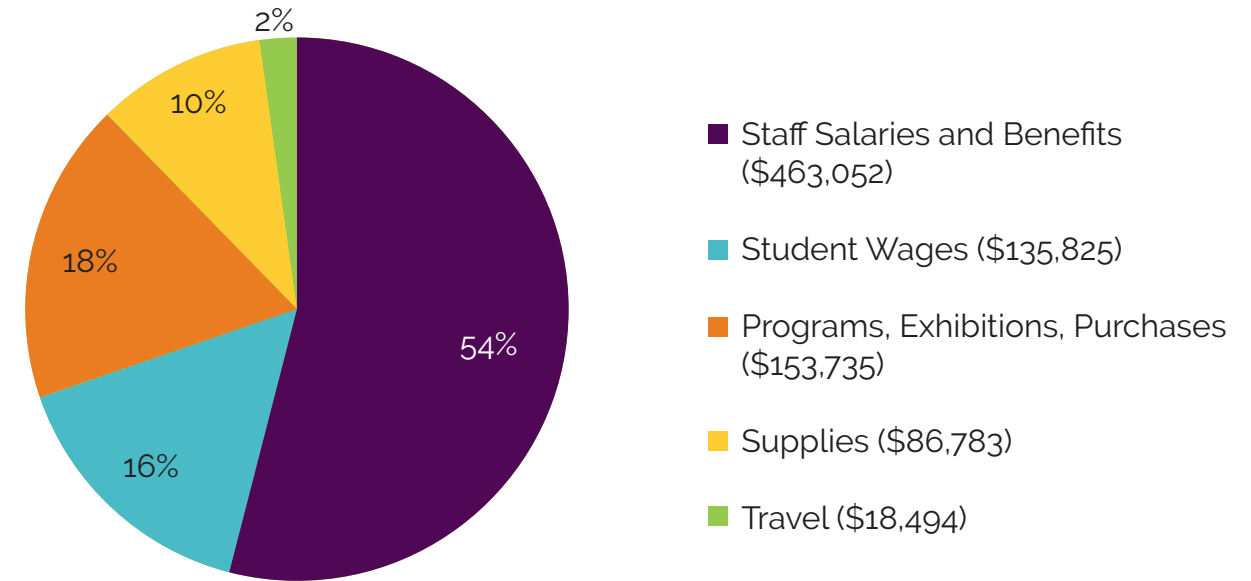
In addition, Ball State University has wisely invested in museum staffing in order to create a safe and secure museum environment that lays the foundation for the continuous development of the museum as both a university and community resource.



### FY2016 Income by Source (\$870,791)



### FY2016 Expenses by Type (\$857,889)



Figures exclude maintenance, utilities, insurance, and overhead paid by Ball State University.



## EXHIBITIONS AND PROGRAMS

### Exhibitions from July 2015 to June 2016:

05/16–08/30/15 | *Listening Across Generations: Fractured Narratives Youth Collaboration* with accompanying book (see [bsu.edu/artmuseum](http://bsu.edu/artmuseum))

05/16–08/30/15 | *Gift of David T. Owsley* with accompanying documentary (see [bsu.edu/artmuseum](http://bsu.edu/artmuseum))

09/24–12/23/15 | *With Watercolor: Content via Technique*, guest curated by Brian Gordy

09/24–12/23/15 | *Being There*, guest curated by Prof. Mark Sawrie

01/21–05/08/16 | *1 in 3: What Does It Take for You to Be Outraged?* from the World Bank Art Program

05/20–12/22/16 | *New Acquisitions 2016*







# ART IN BLOOM

## Art in Bloom 2016

The second annual celebration of art and flowers attracted more than 200 visitors for its signature opening event and public exhibition, increasing DOMA's regional visibility and raising funds for acquisitions, conservation, and programs.

### Participants:

Judy Benken, Normandy Flower Shop, Inc., Muncie, IN  
Jasmine Farris, JP Parker Flowers, Indianapolis, IN (Gold Award)  
Lisa Pritchett, Dandelions Flowers and Gifts, Muncie, IN (Silver Award)  
Steve Strange, Buck Creek in Bloom, Yorktown, IN (People's Choice Award)  
David Strohmeyer, The Empty Vase, Indianapolis, IN  
Jackie Turner, The Flower Bin, Inc., Muncie, IN

### Judges:

Jo Ellen Meyer's Sharp, Indianapolis, IN  
Kari Geary, Fort Wayne, IN

### Benefactors:

Cecil and Barbara Alvarez Bohanon  
Waldo Beebe  
Melissa and Jeff Daniels  
Ann Johnson  
Sandra and Eric Kelly  
Fred Meyer  
Patricia Schaefer  
Carol and Joseph Trimmer  
Sue and Don Whitaker

### Presenting Sponsor:

The Sursa-Griner Group  
ArtsAlive! College of Fine Arts, Ball State University

### Friends:

Jennifer Bott and Phil Repp  
Sheila and Thomas Bracken  
Mary Foster and Tom Clark  
The Honorable Sue and Dr. Paul Errington  
Carey and Jud Fisher  
Nancy and David Galliher  
Indiana Trust & Investment Management  
Barbara and Carl Schafer  
Vera Mae's Bistro



LOANS FROM THE COLLECTION

Major loans of works of art to national and international institutions that increase the museum's visibility and reputation:

- Dixon Gallery and Gardens, Memphis, TN | 07/27/14–10/05/15  
loan of painting to the exhibition *Charles Courtney Curran: Seeking the Ideal*.
- Indiana State Museum, Indianapolis, IN | 11/08/14–03/29/15  
loan of painting to the exhibition *William J. Forsyth: Only the Strong Persist*.
- Cheongju International Craft Biennale, Korea | 09/16/15–10/25/15  
loaned works selected for display in this international design exhibition;  
sculptures from DOMA's exhibition *Anders Ruhwald: One Thing Follows Another (And You Make It Happen)*.
- Museum of Craft and Design, San Francisco, CA | 09/26/15–03/27/16  
traveling exhibition *Without Camouflage. Dafna Kaffeman. Silvia Levenson*.  
Organized by DOMA.
- Château de Fontainebleau, France | 10/17/15–01/26/16  
loan of painting to the exhibition *Le Dauphin, l'artiste et le philosophe. Autour de l'Allégorie à la mort du Dauphin de Louis Lagrenée l'Aîné (The Dauphin, the Artist and the Philosopher. Around Louis Lagrenée's Allegory of the Death of the Dauphin)*.
- Indianapolis Museum of Art, Indianapolis, IN | 10/24/15–02/14/16  
loan of print series to the exhibition *Gustave Baumann, German Craftsman – American Artist*.

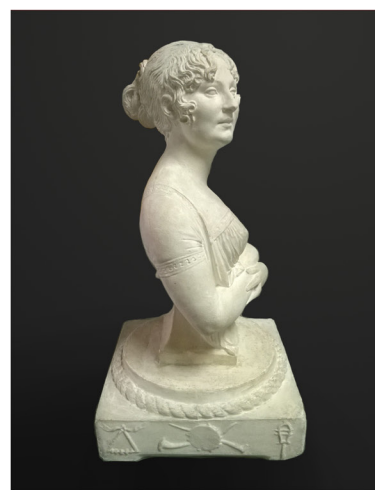
NEW ACQUISITIONS

FY2016 Acquisitions (59 donations and 6 purchases):	66
FY2016 Loans to the collection from David T. Owsley:	45
Total:	111

SELECTED NEW ACQUISITIONS AND LONG-TERM LOANS

Donations and Purchases:

<i>Portrait of Constance-Marie Charpentier, née Bondelu (1767–1849)</i> , about 1808 Joseph Chinard French (1756–1813) plaster Gift of David T. Owsley via the Alconda-Owsley Foundation and Museum Purchase 2016.006.000	<i>Large Typewriter</i> , 2003 William Kentridge South African (born 1955) sugar-lift aquatint and drypoint, ed. 20/40 Friends of the Museum and Museum of Art Purchase 2015.005.000
<i>Head of an Old Man</i> , about 1879 Frank Duveneck American (1848–1919) oil on canvas Gift of Allen W. Bernard 2015.025.001	<i>The Large Miseries of War (Les grandes misères de la guerre)</i> , 1633 Jacques Callot French (1592–1635) etching, third state (set of 18) Museum Purchase 2016.002.001.001-.018



## Loans to the Permanent Collection from David T. Owsley:

*Panel of Offering Goddesses*, 14th century  
Central Tibet, Ming Dynasty (1368–1644)  
gilt copper alloy with inlaid semiprecious stones  
David T. Owsley Collection  
L2015.011.002

*Portrait of King George III (1738–1820)*,  
about 1800  
William Beechey  
British (1753–1839)  
oil on canvas  
David T. Owsley Collection  
L2016.008.000

*Bentwood Serving Dish*, early 20th century  
North America, Canada, Pacific Northwest Coast,  
Haida Culture  
wood with bone inlay  
David T. Owsley Collection  
L2016.005.000

*Pendant Masks*, 19th–20th century  
Unidentified African Artist  
West Africa, Ivory Coast, Baule people  
gold alloy  
David T. Owsley Collection  
L2015.013.001-002





## STAFF AND VOLUNTEERS 2015–2016

Robert La France, Director  
 Rachel Buckmaster, Assistant Director\*  
 Carl Schafer, Associate Director  
 Tania Said, Director of Education  
 Cathy Bretz, Education Program Coordinator  
 Rebecca Vaughn, Registrar and Collection Manager  
 Randy Salway, Exhibition Designer and Preparator  
 Shannon Bryan, Administrative Coordinator\*  
 Joshua Vance, Administrative Coordinator  
 Steve Talley, Photographer  
 Katie King, Information Coordinator

*\*new staff in 2016*

## Student Assistants and Interns

Cassi Amman, Collections Intern  
 Hailey Beard, Public Relations Intern  
 Trevor Campbell, Education Intern  
 Kyrra Clevenger, Education Intern  
 Kayla Gurganus, Curatorial Intern

Caitlin Harrison, Collections Intern  
 Taylor Rose Henderson, Exhibitions Intern  
 Joe Kaplan, Graduate Assistant  
 Regan Kelly, Program Assistant  
 Felicia Konrad, Collections Intern  
 Katie Norman, Preparator Assistant  
 Josh Olson, Preparator Assistant  
 Mikel Prater, Office Volunteer  
 Lily Rawson, Graduate Assistant  
 Mackenzie Robinson, Collections Intern  
 Michael Sales, Office Assistant  
 Lauren Sherwood, Interpretive Assistant  
 Sierra Trowbridge, Education Intern  
 Ashley Vandervelde, Collections Intern  
 Caitlyn Walter, Collections Intern  
 Noelle Wiegand, Collections Intern

## Student Security Guards

Anthony Amore  
 Hannah Bovino  
 Juan Castillo

Charlotte Condon  
Sam Condon  
Tyler Cox  
Raquel DeAugustine  
Emily Dykstra  
Alexus Foreman  
Brook Haynes  
Dan Jacobsen  
Erica Johnson  
Michael Kiess  
Maurizio Lovinello  
Brian Lynch  
Ajay Manukonda  
Matthew Montemayor  
Arlesha Moore  
Alex Mulkey  
Chloe Newman  
Paul Price  
Lucas Reidenbach  
Dana Roberts  
Tiara Pierce Rodgers  
Jesse Roeder

Emma Rogers  
Nick Sanchez  
Justin Schiess  
Alexander Smith  
Corey Standifer  
Kyle Tison  
Jacob Wardell  
Sam Wiser

#### **Student Docents**

Emily Dykstra  
Dakota Hall  
Regan Kelly  
Anna Muckenfuss  
Charlie Schaefer  
Sierra Trowbridge

#### **Community Docents**

Barbara Alvarez Bohanon  
Catherine Bretz  
Christina Coelho  
Nathan Deardorff

Marilyn DeWeese  
Mae Dickinson  
Jane Duckworth  
Margery Frank  
Jean Gadziola  
Ed Hale  
Sigrid Koehler  
Joan Malje  
Diana Miller  
Ulyana Morton  
Bonita Musal  
Robert Pinger  
Richard Ruh  
Vinny Pucciarelli  
Kitty Sandy  
Bea Sousa  
Janet Stratton  
Annemarie Voss  
Suzanne Walker

Designer: Regan Kelly, Graduate Assistant, Emerging  
Media Design and Development, Ball State University

#### **FRIENDS ADVISORY COMMITTEE**

Fred Meyer, Chair  
Brad LaTour, Secretary

#### **Members at-large:**

Barbara Alvarez Bohanon  
Melissa Daniels  
Mary Foster  
Jim Gooden  
Ann Johnson  
Patricia Schaefer  
Kent Shuff  
Don Whitaker  
Jennifer Williams

#### **Ex officio members:**

Robert La France, Director, DOMA  
Sarah Jenkins, President, DOMA Alliance  
Jean McCauley, President, Muncie Art  
Students League  
Robert Kvam, Dean College of Fine Arts





**DAVID OWSLEY  
MUSEUM OF ART** **BALL  
STATE  
UNIVERSITY**