

A red-tinted photograph of the David Owsley Museum of Art building, a large, ornate Gothic Revival structure with multiple gables, windows, and a central entrance. The building is the background for the entire page.

# DAVID OWSLEY MUSEUM OF ART

ANNUAL REPORT 2016–2017

## DAVID OWSLEY MUSEUM OF ART STAFF



(Clockwise) Robert G. La France, Shannon Bryan, Rebecca Vaughn, Randy Salway, Rachel Buckmaster, Cathy Bretz, and Tania Said

## FROM THE DIRECTOR

In the fiscal and academic year 2016–17, the David Owsley Museum of Art (DOMA) celebrated another season of dynamic growth, ambitious exhibitions, and exciting programs. The collection continued to expand, mainly because of David T. Owsley’s generosity but also due to thoughtful gifts from new donors, such as Amy Poster and Thea Burger. Charles and Kathy Harper supported a major conservation treatment of the monumental Flemish Late Renaissance panels by Marten de Vos, while other donations, purchases, and long-term loans continued to fortify the collection with excellent examples of contemporary, modern, and early modern art from around the globe.

Two main exhibitions were timed to coincide with the fall and spring semesters of the 2016–17 academic calendar. The first was *CONTINUUM: The Art of Michael Dunbar in the Sculptural Tradition*. The juxtaposition of contemporary sculptor Michael Dunbar’s Machinist Series with significant 19th and 20th-century sculpture from the collection

encouraged viewers to reconsider the continuous development and evolution of sculptural styles. In addition, *CONTINUUM* became the first exhibition wholly conceived and organized by DOMA to travel to the Snite Museum of Art at the University of Notre Dame. Also, a video documentary produced in conjunction with the exhibit, “A New Statement, Michael Dunbar at Ball State University,” won an Emmy for Outstanding College/University Student Production 2016 from the Lower Great Lakes Chapter Regional Emmy Awards. This was the first major award to arise from the collaboration between DOMA and the Digital Storytelling Program in the Department of Telecommunications (CCIM).

The spring exhibition, *SHIFT: Jongil Ma, Christopher Smith, Corban Walker* featured cutting-edge sculpture and video by internationally acclaimed artists from South Korea, the USA, and Ireland. The artists’ conceptual, abstract works of art tested viewers’ notions of space, scale, and identity. The exhibition was accompanied by “Music in the Museum:



SHIFTing Rhythm, Emerging Sounds,” featuring musical improvisations inspired by the artists’ works performed by jazz pianist Jim Rhinehart. Both *CONTINUUM* and *SHIFT* included stimulating presentations by the featured artists that appealed to both students and members of the public.

DOMA contributes to the university’s academic environment in several ways. Every year, the museum hosts as many as 15 student interns in various roles, including curatorial, education, collection care, art preparation, and office management. DOMA also routinely employs 25 or more student gallery attendants and, in 2016–17, it benefited from the volunteer time and expertise of 34 dedicated docents, who led tours and gallery conversations. DOMA student interns and attendants hail from several different Ball State colleges and departments. In March 2017, two joined a mixed group of art, business, and economics students on a tour of museums, collections, and auction houses in New York City led by Professor Cecil Bohanon and myself. Finally, DOMA connects Ball State University students to the public with programs that bridge the

campus and community. Final Fridays showcase local personalities, while educational programs introduced 2,866 Indiana K–12 students to the world of art. Programs, such as Meditation in the Museum, Music in the Museum, and Community Day, paired with the first-rate exhibitions, artists, and encyclopedic permanent collection make DOMA the envy of larger cities.

On your next visit to the museum, please join me in thanking the dedicated student and professional staff for their hard work in 2016–17, and wish them an even more thrilling and productive 2017–18!

Sincerely,



Robert G. La France  
Director

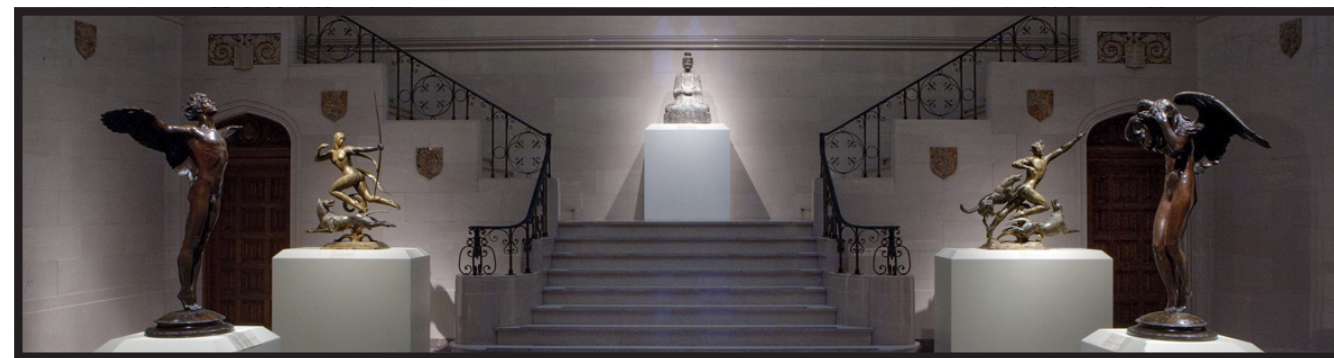
## MISSION STATEMENT

The David Owsley Museum of Art cultivates lifelong learning and recreation in the visual arts through its collection of original works of art, engaging exhibitions, and educational programs for the university community and other diverse audiences.

As adopted by the Ball State University Board of Trustees; December 19, 2008

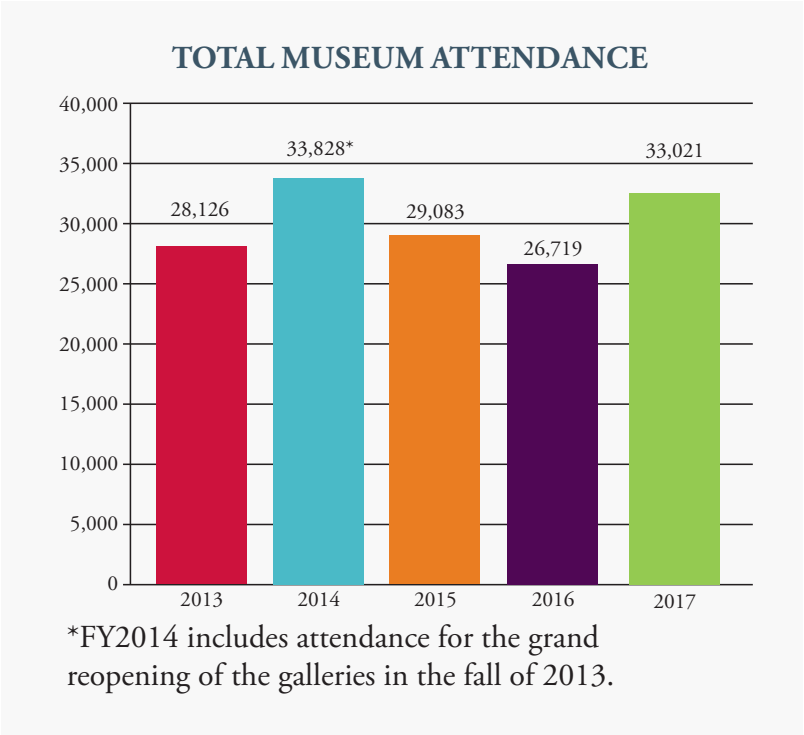
## ABOUT THE DAVID OWSLEY MUSEUM OF ART

The David Owsley Museum of Art is an 80-year-old university art museum that houses a world art collection with over 11,000 objects representing civilizations from six of the seven continents. DOMA balances exciting contemporary and historical art exhibitions with engaging displays of the permanent collection in a rich, educational environment that serves both the university and the East Central Indiana region.



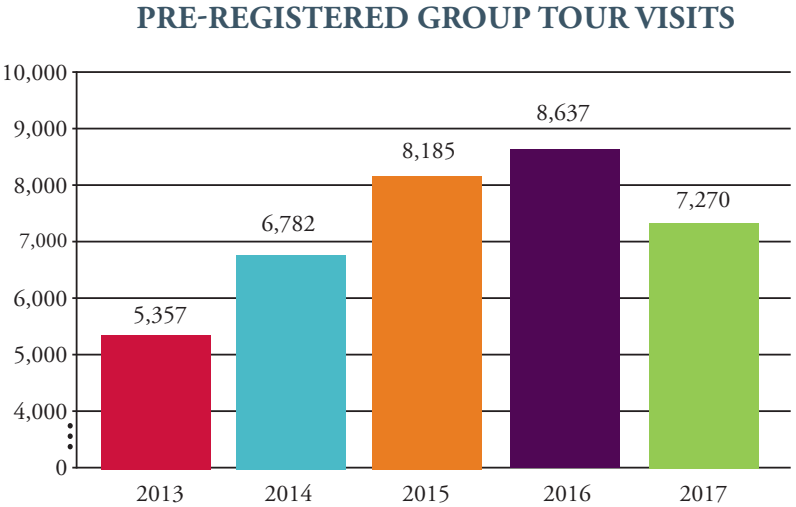
# ATTENDANCE

Visitor attendance improved substantially compared to the previous academic year, and nearly matches the record high attendance experienced in the year 2013–14 (following the museum’s latest expansion). The increase from the prior year can be attributed to several factors, including a strong pair of attractive exhibitions (with nearly 5,000 visits to each exhibition); the growing popularity of the museum’s signature programs, such as Final Fridays and Meditation in the Museum; the success of social media advertising for events; and more accurate methods for compiling visitor counts. The general attendance figure can be broken down further into gallery visits of 30,986, while after-hours events attracted 2,035 visitors in 2016–17.



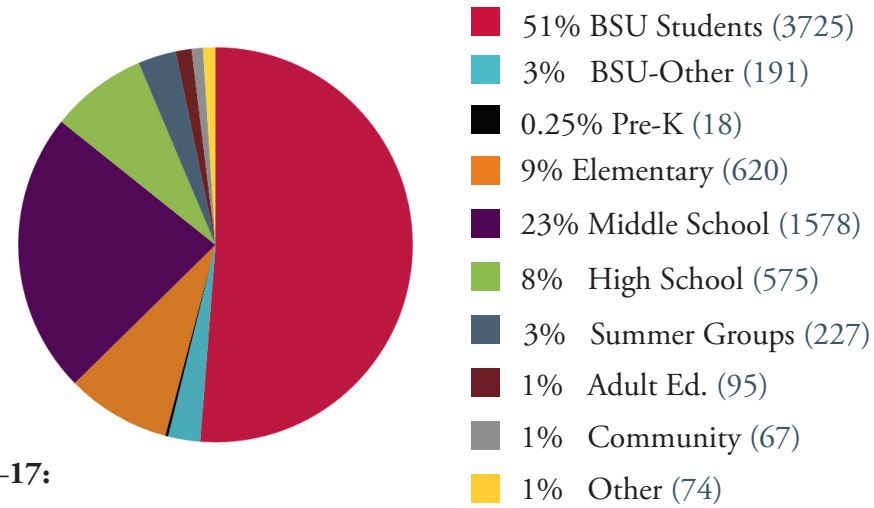
# EDUCATION AND OUTREACH

In order to fulfill its educational mission, DOMA has become increasingly student-focused and strives to improve engagement with both Ball State University students and Indiana K–12 schools. In the academic year 2016–17, 7,270 visitors (mostly students) toured the museum in 227 groups. While this is a decrease from last year’s record numbers, the difference is offset by an increase in general attendance.





In the academic year 2016–17 Ball State University students accounted for 51% of the museum’s group visitors, while 40% of group visitors were Indiana K–12 students.



**Indiana K–12 student visits 2016–17:**

- A total of 2,866 Indiana K–12 students pre-registered for a school group visit to the museum, this includes 227 students visiting as part of summer programs.
- The number of school group guided tours increased from 42 in 2016 to 60 in 2017.
- School groups came from 10 different counties (Hamilton, Delaware, Wabash, Madison, Marion, Henry, Grant, Huntington, Blackford, and Adams)

In 2016–17, school groups came from 17 districts, plus 2 private schools, 1 charter school associated with Ball State University, and 2 public schools associated with Ball State University. Twelve of the visiting school groups were new to the museum this year.

**SCHOOLS**

- Burris Laboratory School
- Indiana Academy
- Inspire Academy
- Delta High School
- Wapahani High School\*
- East Washington Academy
- Mitchell Elementary School
- Northside Middle School
- North View Elementary School
- Sutton Elementary School\*
- Yorktown High School
- South Adams Middle School\*
- Montpelier Elementary School\*
- Eastbrook High School
- Lakeview Christian School\*
- Fall Creek Intermediate School\*
- Riverside Intermediate School\*
- Sand Creek Intermediate School
- Knightstown High School
- Wilbur Wright Elementary\*

**DISTRICT, COUNTY**

- Ball State University, Delaware
- Ball State University, Delaware
- Charter School, Delaware
- Delaware Community Schools, Delaware
- Liberty-Perry Community Schools, Delaware
- Muncie Community Schools, Delaware
- Muncie Community Schools, Delaware
- Muncie Community Schools, Delaware
- Muncie Community Schools, Delaware
- Muncie Community Schools, Delaware
- Yorktown Community Schools, Delaware
- South Adams Schools, Adams
- Blackford County Schools, Blackford
- Eastbrook Community Schools, Grant
- Private School, Grant
- Hamilton Southeastern Schools, Hamilton
- Hamilton Southeastern Schools, Hamilton
- Hamilton Southeastern Schools, Hamilton
- Charles A. Beard Corporation, Henry
- New Castle Community Schools, Henry



Tri Senior High School  
 Riverview Middle School  
 Anderson High School  
 Eastside Elementary  
 Frankton Elementary School\*  
 Frankton High School  
 Summitville Elementary\*  
 East Elementary School\*  
 Fortune Academy\*  
 Manchester Intermediate School  
 Wabash High School

South Henry Corporation, Henry  
 Huntington Community Schools, Huntington  
 Anderson Community Schools, Madison  
 Anderson Community Schools, Madison  
 Frankton-Lapel Community Schools, Madison  
 Frankton-Lapel Community Schools, Madison  
 Madison-Grant United School Corp., Madison  
 South Madison Community Schools, Madison  
 Private School, Marion  
 Manchester Community Schools, Wabash  
 Manchester Community Schools, Wabash

*\*First recorded visit to DOMA*



#### FALL 2018 AND BEYOND:

In the spring of 2017, Director of Education Tania Said was awarded a Ball Brothers Foundation grant of \$5,000 to start SMARTours (School Museum Art Readiness Tours), a pilot program for 4th graders in Muncie City Schools (MCS). The program's eventual goal is to invite all K–12 MCS students to visit the museum and BSU campus at least once during their academic careers.





## UNIVERSITY ENGAGEMENT

DOMA regularly supports students in active learning roles and as student workers:

- 12–17 student interns per year at up to 20 hours per week
- 25 student guards per year at up to 20 hours per week.
- Hundreds of student class visits, projects, and learning activities.



The museum continued to collaborate with several departments at Ball State University and employed a growing number of student interns to teach and study the collection in the academic year 2016–17.

For example, over the past few years students in Professor Lara Kuykendall's Art Museum and Theory courses wrote short catalogue entries called Owsley Moments. Students from a subsequent courses produced, added soundtracks, and read the entries in public radio spots that play on Indiana Public Radio on Thursdays and Saturdays or can be accessed on the station's website.

(<http://indianapublicradio.org/owsleymoment/>)

In 2016–17 the Owsley Moments helped to stimulate student interest in more traditional forms of art historical research and museum education—while also capturing the attention (and the contributions) of students in a variety of other majors.

The same is true of the series of continuing student-directed documentaries about the museum and its exhibitions, made from a partnership between CCIM and DOMA about museum topics. The first of these, called Gift of David T. Owsley (2015) explains the museum's ethos and introduced the region to the museum's namesake benefactor through airings on public television.

(Available on Vimeo at <https://vimeo.com/128513855>).

The second such film was based on the museum's 2016–17 exhibition: *A New Statement, Michael Dunbar at Ball State University*, which garnered an Emmy for Outstanding College/University Student Production 2016 from the Lower Great Lakes Chapter Regional Emmy Awards in June 2017.

The film can be accessed on YouTube at <https://youtu.be/-Olx2S3RVrw>





## COMMUNITY ENGAGEMENT

DOMA is a major community resource and a point of pride for the city and region, in addition to its use as an educational tool for a wide variety of departments at Ball State University.

- Open 7 days a week throughout the year, M–F 9–4:30; Sat–Sun 1:30–4:30
- (closed for university holidays)
- FREE ENTRANCE (paid parking on weekdays; free parking available on weekends)
- 4–5 public exhibitions annually

DOMA hosts several community engagement programs that began or have been enhanced in 2016–17, including:

- Final Fridays: evening program in the museum held twice per semester that invites speakers from the community to mix with BSU-affiliated presenters to show what's new and cool in Muncie. Includes a DJ and refreshments.
- Community Day: held at least once a semester with museum activities for all ages
- Quad Bash: as a focal point of the Quad, the museum is open late with giveaways, activities, and food for the incoming students in this fall event to welcome students.
- Docent tours: every Saturday and often on Sunday, as well as by appointment. DOMA has a large and active docent community of 30–40 members who contributed 1,193 hours of volunteer time in FY2017.





# FY2017 FINANCIAL SNAPSHOT\*

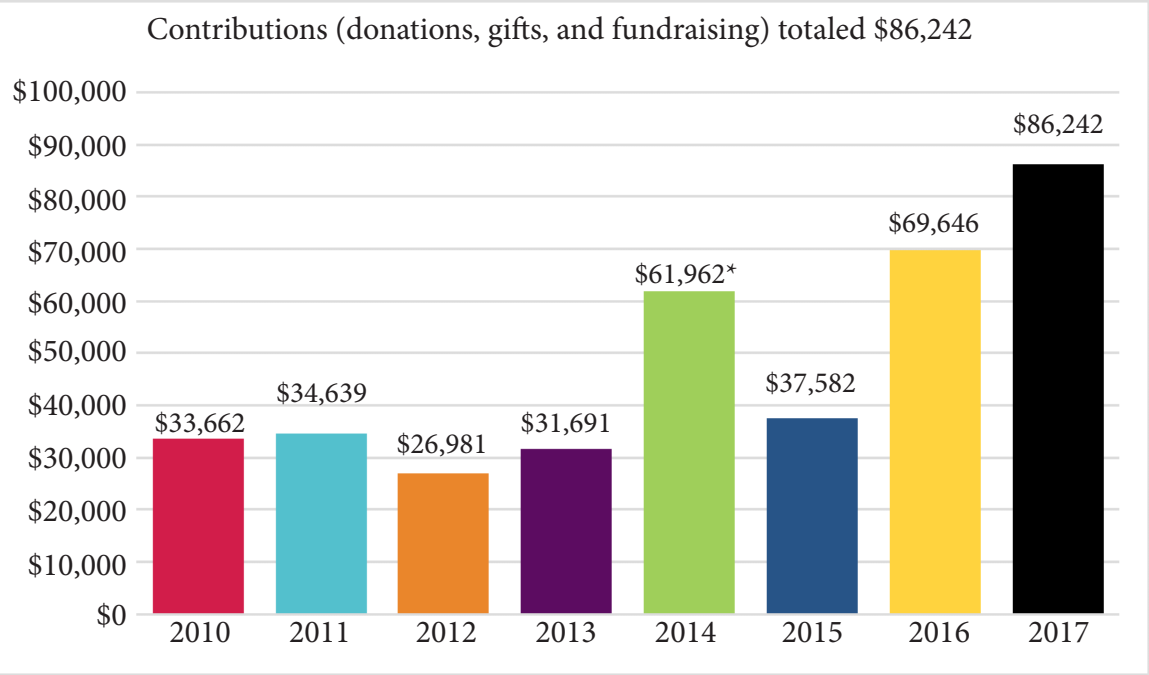
In fiscal year 2016–17, DOMA achieved a new record for cash contributions. Major donors and support groups, such as the Benefactors and Friends of the Museum, helped to lift the total to more than \$80,000. The successful second annual *Art in Bloom* fundraising event alone netted more than \$10,000 for programs, acquisitions, and conservation projects.

The effective management of expenses has permitted the museum to expand the size and scope of exhibitions and related programs, maximizing the impact of philanthropic support.

In addition, Ball State University has wisely invested in museum staffing in order to create a safe and secure museum environment that lays the foundation for the continuous development of the museum as both a university and community resource.

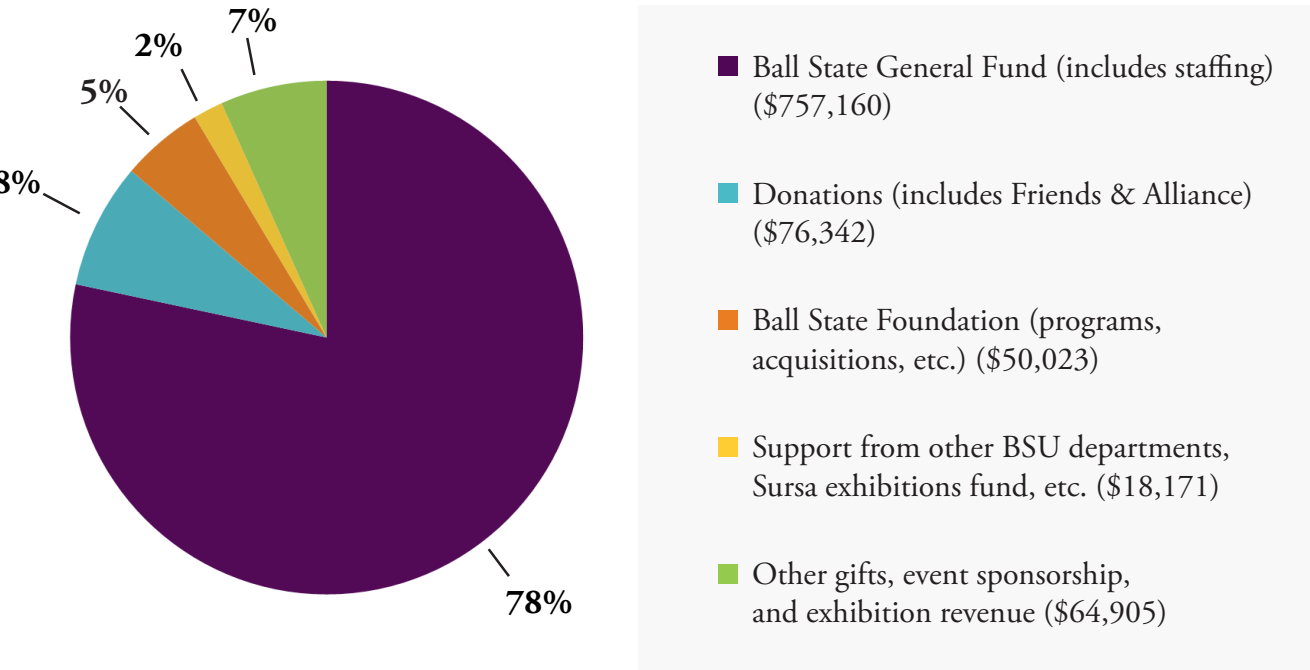


\*Unaudited



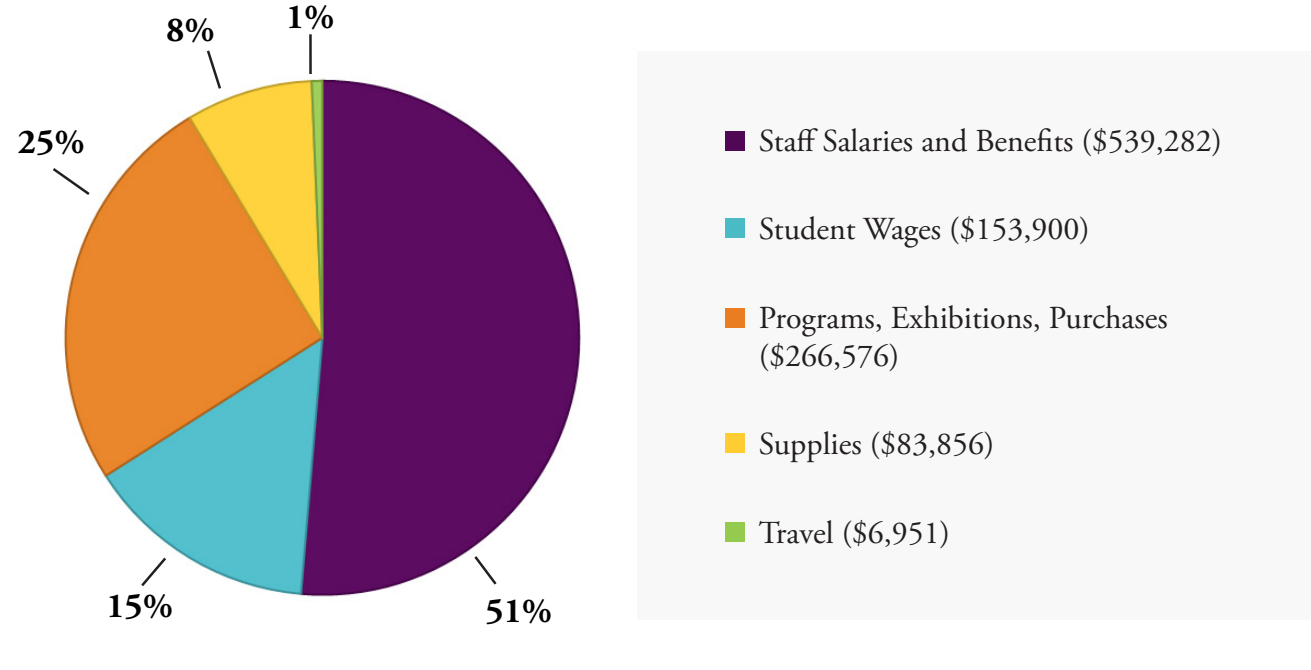
\*Includes donations for 2013 reopening gala

FY2017 Income by Source (\$966,601)\*



\*Unaudited

FY2017 Expenses by Type (\$1,050,565)\*



Figures exclude maintenance, utilities, insurance, and overhead paid by Ball State University.

\*Unaudited



## Exhibitions and Programs 2016–2017

---

May 19–September 10, 2017

*New Acquisitions 2017*

January 20–May 7, 2017

*SHIFT: Jongil Ma, Christopher Smith, Corban Walker*

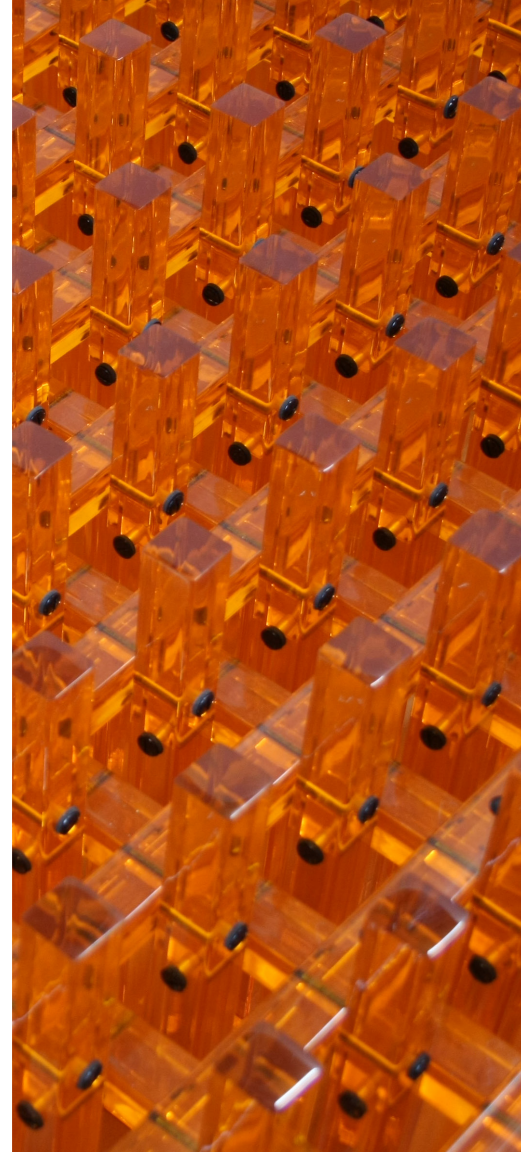
September 22–December 19, 2016

*CONTINUUM: The Art of Michael Dunbar in the Sculptural Tradition*

The first traveling exhibition developed entirely by the David Owsley Museum of Art featuring master pieces from its collection paired with contemporary art. *CONTINUUM* traveled to the Snite Museum of Art, University of Notre Dame January 22–March 5, 2017

May 20–September 4, 2016

*New Acquisitions 2016*







# ART IN BLOOM

## Art in Bloom 2017

The third annual celebration featured floral creations inspired by artwork in DOMA's collection and welcomed more than 300 visitors for the opening event and public exhibition. This signature weekend increases the museum's regional visibility and raises funds for acquisitions, conservation, and programs.

## ART IN BLOOM

---

### Participants:

Jasmine Farris, JP Parker Flowers, Indianapolis (Silver Award)  
Rebecca Geary, R. Geary Floral Design, Fort Wayne  
Lisa Pritchett, Dandelions Flowers and Gifts, Muncie  
Sonni Stevenson, Miller's Flower and Gift Shop, Muncie  
Julie Vance, Buck Creek in Bloom, Yorktown (Gold Award, Dean's Award, and People's Choice Award)

### Judges:

Barbara Alvarez Bohanon, Muncie  
Marianne Glick, Indianapolis  
Jo Ellen Meyers Sharp, Indianapolis

### Benefactors:

Melissa and Jeff Daniels  
Indiana Trust Company  
Ann Johnson  
Sandra and Eric Kelly  
Fred Meyer  
Frances Petty Sargent and Tom Sargent  
Patricia Schaefer  
Carol and Joe Trimmer  
Sue and Don Whitaker

### Presenting Sponsor:

The Sursa-Griner Group, Raymond James  
Arts Alive!, Ball State University College of Fine Arts  
Dean's Award courtesy of the Ball State University  
College of Fine Arts  
Additional support provided by Wasson Nursery

### Friends:

Jennifer Bott and Phil Repp  
Sheila and Thomas Bracken  
The Hon. Sue Errington  
Carey and Jud Fisher  
Mary Foster and Tom Clark  
Nancy and David Galliher  
Doris Lawhead  
Vera Mae's Bistro



## NAMING OF THE FRANK. C AND ELIZABETH B. BALL RECITAL HALL

### Fine Arts Building | November 3, 2016

**5:30 p.m.** Wine and Cheese Reception

**6:00 p.m.** Naming Ceremony

Museum Director Robert G. La France  
University Interim President Terry King  
Museum Benefactor David T. Owsley

**6:30 p.m.** Lecture by Amy G. Poster, Asian Art through the Collector's Eye

Poster is an independent curator of Asian art and the consulting curator of Asian art at the Museum of Fine Arts, Houston, Texas, for the exhibition *Emperors' Treasures: Chinese Art from the National Palace Museum, Taipei*. She is also the curator emerita of Asian art at the Brooklyn Museum, where she was also chair of the Asian art department from 1989–2006.



## LOANS FROM THE COLLECTION

In 2016–17, five important works from DOMA's collection were lent to major exhibitions at museums across the United States of America. The caliber of the institutions and exhibitions indicate the importance and value of the collection as DOMA continues to engage with the national network of museums.

*JapanAmerica: Points of Contact, 1876 – 1970*

Herbert F. Johnson  
Museum of Art,  
Cornell University,  
Ithaca, New York  
August 27–  
December 18, 2016

Crocker Art Museum,  
Sacramento, California  
February 12–May 21, 2017

*Bowl of Goldfish*, 1912  
Childe Hassam  
American (1859–1935)  
oil on canvas  
Frank C. Ball Collection, gift of  
the Ball Brothers Foundation  
1995.035.073

*American Watercolor in the Age of Homer and Sargent*

Philadelphia Museum of Art,  
Philadelphia, Pennsylvania  
March 1–May 14, 2017

*A Venetian Market*, 1889  
Robert Frederick Blum  
American (1857–1903)  
watercolor  
Elisabeth Ball Collection, gift of the George and Frances Ball Foundation  
David Owsley Museum of Art, Ball State University, Muncie, Indiana  
1995.036.005

*America Collects Eighteenth-Century French Painting*

National Gallery of Art,  
Washington DC  
May 21–August 20, 2017

*Marquise de Caumont La Force*, 1767  
François-Hubert Drouais  
French (1727–1775)  
oil on canvas  
E. Arthur Ball Collection, gift of the Ball Brothers Foundation  
1995.035.125

*Art of the Jazz Age: Style in the 1920s*

Cooper Hewitt, Smithsonian Design Museum,  
New York, New York  
April 7–August 20, 2017

Cleveland Museum of Art,  
Cleveland, Ohio  
September 30, 2017–  
January 14, 2018

*Diana and Actaeon*, 1925  
Paul Manship  
American (1885–1966)  
gilt bronze  
Frank C. Ball Collection, Gift of the Ball Brothers Foundation  
1995.035.163-.164



## NEW ACQUISITIONS

FY2017 Acquisitions (# donations and # purchases):	66
FY2017 Loans to the collection from David T. Owsley:	5
Total:	71

## SELECTED NEW ACQUISITIONS AND LONG-TERM LOANS

*Untitled*, 2001  
**Ruth Duckworth**  
 American, born  
 Germany (1919–2009)  
 porcelain  
 Gift of Theodora B.  
 and Howard I. Oberlander  
**2016.010.000**

*Paddles with Killer Whale Designs*,  
 about 1880  
**Unidentified Tlinglit Artist**  
 Pacific Northwest Coast  
 wood, paint  
 Gift of David T. Owsley via the  
 Alconda-Owsley Foundation  
**2017.036.001-.002**

*Chesterton, Indiana*, 2015  
**Robert E. von Sternberg**  
 American (born 1939)  
 inkjet print, printed 2016  
 Gift of The Museum Project  
**2016.009.012**

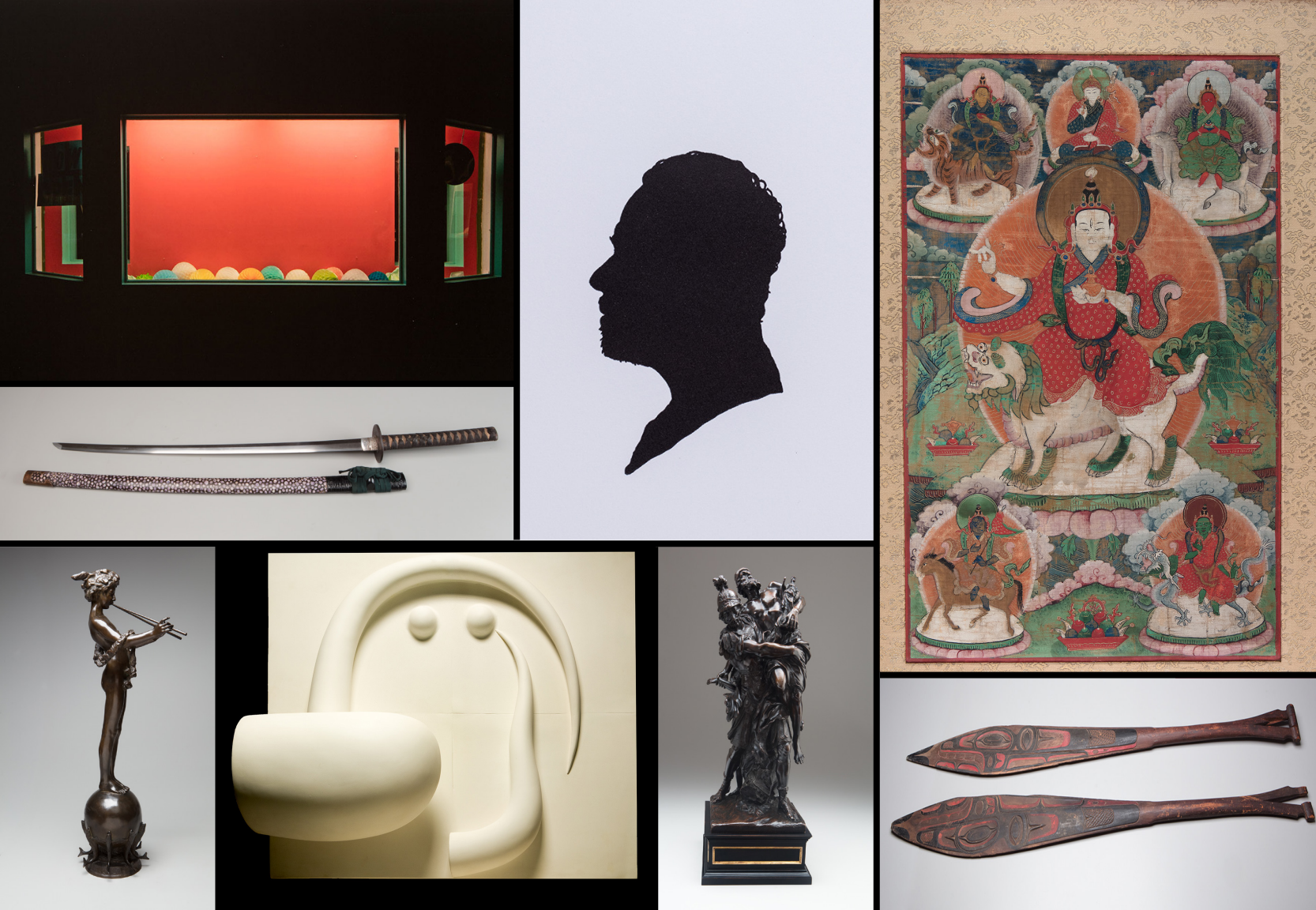
*Pan of Rohallion*, 1889–90  
**Frederick William MacMonnies**  
 American (1863–1937)  
 bronze, cast after 1894  
 Gift of David T. Owsley via the  
 Alconda-Owsley Foundation and the  
 Frank C. Ball Collection, gift of the  
 Ball Brothers Foundation by exchange  
**2017.029.000**

*Silhouettes*, 1996–2016  
**Peter Hristoff**  
 Turkish (born 1958)  
 silkscreen on paper  
 Gift of the Artist  
 via Lisa A. Banner  
**2017.001.001-009**

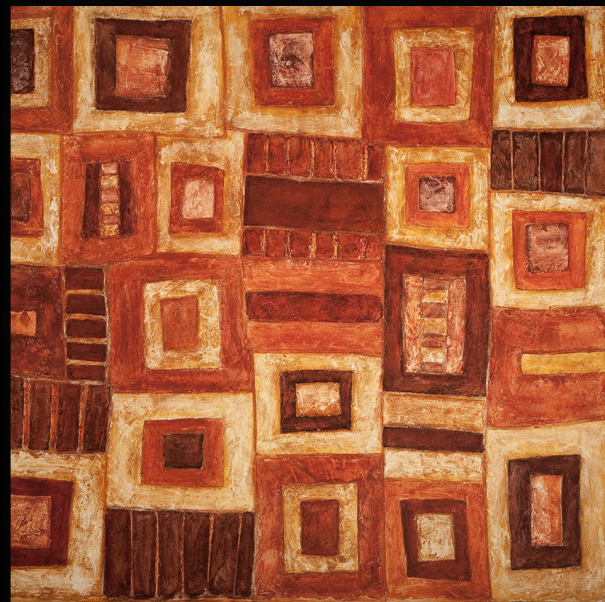
*Long Sword (Katana)*,  
 about 1630  
 Japan, Edo Period (1615–1868)  
 steel, bronze, iron, lacquer, seashell,  
 and sharkskin  
 Gift of David T. Owsley via the  
 Alconda-Owsley Foundation  
**2017.052.000a-b**

*Defiance (The Shostakovich  
 Seventh Symphony)*, about 1943  
**William Gropper**  
 American (1897–1977)  
 oil on canvas  
 Gift of David T. Owsley via the  
 Alconda-Owsley Foundation  
**2017.011.000**

*Thangka of Tseringma  
 with Her Retinue of Life  
 Goddesses*, late 1700s  
 Mongolia, Qing Dynasty  
 (1644–1911)  
 gouache on cotton  
 Gift of Amy and  
 Robert Poster in Honor of  
 David T. Owsley  
**2016.012.000**







## LOANS TO THE PERMANENT COLLECTION FROM DAVID T. OWSLEY

*Ndunga Mask*, about 1900

**Woyo People**

West Africa, Democratic Republic of Congo and  
Angola

painted wood

David T. Owsley Collection

**L2016.009.000**

*Ouarzazate*, 2003

**Debbie Ma**

American (born 1967)

marble dust and pigments on canvas

David T. Owsley Collection

**L2016.013.000**

*Autumn Maine Landscape*, about 1908

**Marsden Hartley**

American (1877–1943)

oil on paperboard

David T. Owsley Collection

**L2017.007.000**

*The Seine at Chatou*, 1908

**Maurice de Vlaminck**

French (1876–1958)

oil on canvas

David T. Owsley Collection

**L2016.018.000**

*The Virgin and Child Crowned by Angels*,  
about 1505–10

**Master of the Magdalene Legend**

Netherlandish (active about 1483–1530)

oil on panel

David T. Owsley Collection

**L2017.006.000**



## STAFF AND VOLUNTEERS 2016–2017

### MUSEUM STAFF

Robert La France, Director  
Rachel Buckmaster,  
Assistant Director  
Tania Said, Director of Education  
Cathy Bretz, Education Program  
Coordinator  
Rebecca Vaughn, Registrar and  
Collection Manager  
Randy Salway, Exhibition  
Designer and Preparator  
Shannon Bryan, Administrative  
Coordinator  
Steve Talley, Photographer

### STUDENT ASSISTANTS AND INTERNS

Josh Olson, Preparator Assistant  
Alexis Kiesel, Education Intern  
Lily Rawson, Graduate Assistant  
Michael Sales, Office Assistant

Regan Kelly, Program Assistant  
Cassi Amman, Administrative  
Assistant  
Sierra Trowbridge, Education  
Intern  
Daniel Combs, Education Intern  
Elena M'Bouroukounda,  
Collections Intern  
Katie Ronzio, Public Relations  
Intern  
Emma Rogers, Outreach Assistant  
Mackenzie Robinson, Collections  
Intern  
Ally Burch, Preparator Assistant  
Faith Gorrell, Library Assistant  
Sakhi Shaw, Education Assistant

### STUDENT SECURITY GUARDS

Abby Specht  
Ajay Manukonda

Alex Mulkey  
Alexander Smith  
Alexus Foreman  
Arlesha Moore  
Brook Haynes  
Charlotte Condon  
Chloe Newman  
Corey Standifer  
Dan Jacobsen  
Dana Roberts  
Delyla Bell  
Denis Bohanon  
Emily Dykstra  
Hannah Bovino  
Jamal Brooks  
Juan Castillo  
Laura Lawrence  
Lucas Reidenbach  
Mason Galvin  
Matthew Montemayor  
Maurizio Lovinello

Michael Kiess  
Noah Dale  
Raquel DeAugustine  
Samantha Wiser  
Sarah Crawford  
Tiara Pierce Rodgers  
Maurizio Lovinello  
Dana Roberts

### COMMUNITY DOCENTS

Barbara Alvarez Bohanon  
Vernon Bedel  
Shannon Bryan  
Marilyn DeWeese  
Margery Frank  
Jean Gadziola  
Monica James  
Sigrid Koehler  
Joan Malje  
Ulyana Morton  
Vinny Pucciarelli  
Richard Ruh

Kitty Sandy  
Bea Sousa  
Lyla Spath  
Janet Stratton  
Annemarie Voss

### STUDENT DOCENTS

Delyla Bell  
Yiyang Chen  
Faith Gorrell  
Dakota Hall  
Regan Kelly  
Carli Mandel  
Kiya Mullins  
Joan Seig  
Breyanne Urbin  
Caitlyn Walter

### FRIENDS ADVISORY COMMITTEE

Melissa Daniels, Chair  
Brad LaTour, Secretary

### Members at-large:

Mary Foster  
Jim Gooden  
Ann Johnson  
Fred Meyer  
Patricia Schaefer  
Kent Shuff  
Don Whitaker  
Jennifer Williams

### Ex officio members:

Robert La France, Director,  
DOMA  
Sandra McCallister, President,  
DOMA Alliance  
Linda Hanson, President, Muncie  
Art Students League  
Robert Kvam, Dean College of  
Fine Arts  
Alli Badgero, Director of  
Development CCIM and CFA



