

**DAVID
OWSLEY
MUSEUM** OF
ART BALL STATE
UNIVERSITY

ANNUAL

REPORT

2019-2020



FROM THE DIRECTOR

The David Owsley Museum of Art launched the 2019-20 academic and fiscal year with three exhibitions, dozens of programs, and an array of activities that came to a halt on March 18, 2020, with the closure of the campus and museum in order to slow the spread of the coronavirus. This report reviews the museum's progress and impact from July 1, 2019, through June 30, 2020, including three months when in-person visits and onsite staffing were replaced by online programs, telework, and virtual meetings. As the world changed, the museum adjusted to the reality of the pandemic, physical distancing, and remote learning. I can't commend the staff enough for their dedication and flexibility during a time of crisis.

On September 19, 2019, the museum opened the exhibition **Recent Acquisitions: Connecting to the Past, Committing to the Future**, featuring 92 objects of African, Asian, North American, European, and Oceanic art acquired between 2017 and 2019. The exhibition manifested our commitment to respectfully display the artistic heritage of the world along with our own region and nation. **Recent Acquisitions** also welcomed the first contributions of a new staff member, Dr. Noelle Giuffrida, who serves a joint role as assistant professor in the School of Art and assistant curator of Asian art at DOMA.

The fall semester was further enriched by Indiana artist and Ball State alumnus **Robert Pulley's loan of his monumental ceramic sculpture Orator**. Placed at the focal point of the museum's Sculpture Court, *Orator* was exhibited in tandem with the artist's one-person show at the School of Art's Ned and Gloria Griner Art Gallery.

The spring calendar showcased **Mexican Modernity: 20th Century Paintings from the Zapanta Collection**, representing not only the three great muralists (José Clemente Orozco, Diego Rivera, and David Alfaro Siqueiros), but also Frida Kahlo, Rufino Tamayo, and Francisco Zúñiga, among others. In a first for DOMA, museum labels and the catalogue were written in both English and Spanish, as one example of our continuing efforts to include wider audiences. In addition, this groundbreaking show was accompanied by an exhibition of works that highlighted Mexican artists' influence on East Central Indiana and the United States. **Mexican Modernity: IMPACT** showcased drawings and prints by Rivera and Siqueiros collected by the Ball family; paintings and prints by the Richmond (Indiana) artists Howard Leigh and Carolyn Bradley; and a special loan of vintage photographs from a major New York gallery documenting the life of Frida Kahlo.

A series of inclusive programs began in the Fall of 2019 only to be canceled or transformed in the Spring of 2020. These included presentations by our most creative community members on the themes of New and Old at Final Friday events in September and October 2019—both in conjunction with the museum's exhibition of recent acquisitions. In the 2019-2020 academic year, the museum held several Express Talks—short and free lunchtime focus presentations—on the topics of art in the collection by Latinx, Native American, African American, and women artists (a fourth talk about Asian Pacific artists was canceled due to the COVID situation). We plan to renew these talks next year while continuing to highlight the diversity of the museum's world art collection.

Last year, the museum resumed its K-12 programs by hosting more than 1,100 students for in-person visits and activities. The anchor for these experiences is the Student Museum Art Readiness Tour (SMART) program conducted in collaboration with Muncie Community Schools that served about 350 students from 14 fourth-grade classes. To learn more about this innovative program and the effect that it has on both students and teachers, I encourage you to watch the new SMART program documentary on DOMA's Vimeo channel (and available through



DOMA staff members in the exhibition **Recent Acquisitions: Connecting to the Past, Committing to the Future**:

(clockwise) Rachel Buckmaster, Randy Salway, Robert G. La France, Denise Mahoney, Jordan Huffer, Cathy Bretz, Tania Said, Noelle Giuffrida.

our website at bsu.edu/doma). A memorable visit from 143 Muncie Central High School students and teachers, in conjunction with the *Mexican Modernity* exhibitions, marked another successful K-12 educational partnership just before the schools closed due to the pandemic.

Sadly, several of the museum's signature events were canceled, such as DOMA's Edmund F. Petty Lecture in March and the Art in Bloom fundraiser in May. While concerned about these losses and the early closure of exhibitions, our hearts go out to the Ball State students of the class of 2020, whose formal graduation ceremonies have yet to be held. DOMA adapted to the abrupt change in circumstances by pivoting its focus to digital engagement and moving its in-person programming

online. In late June, DOMA held its first fully online Final Friday event dedicated to the theme of Bridges and Borders, which was inspired by the recent *Mexican Modernity* exhibition. Although closed to the public, the museum unveiled a new eNewsletter and launched a fresh online search page, making images and data about its art collection—beginning with the items currently on display in the galleries—accessible to anyone with a computer. These online platforms allow DOMA to stay connected to the curious and creative people in Muncie, the region, and the world. Looking ahead to reopening in August 2020, your museum is preparing more online programming and virtual museum experiences while also making the safety arrangements necessary to accommodate viewing and learning in the galleries.

This report examines the museum's accomplishments and community impact in the past year as we look towards an uncertain future. What is predictable is that the David Owsley Museum of Art will continue to fulfill its mission through its collection of original works of art, exhibitions, and programs in the next academic year. Please follow and support us through these changing times by joining the Friends of the Museum or the David Owsley Museum of Art Alliance in the coming year!

Robert La France
Director of the David Owsley Museum of Art

THE DAVID OWSLEY MUSEUM OF ART
CULTIVATES LIFELONG LEARNING AND
RECREATION IN THE VISUAL ARTS
THROUGH ITS COLLECTION OF ORIGINAL
WORKS OF ART, ENGAGING EXHIBITIONS,
AND EDUCATIONAL PROGRAMS FOR THE
UNIVERSITY COMMUNITY AND OTHER
DIVERSE AUDIENCES.

—Mission Statement, as adopted by the Ball State University
Board of Trustees on December 19, 2008



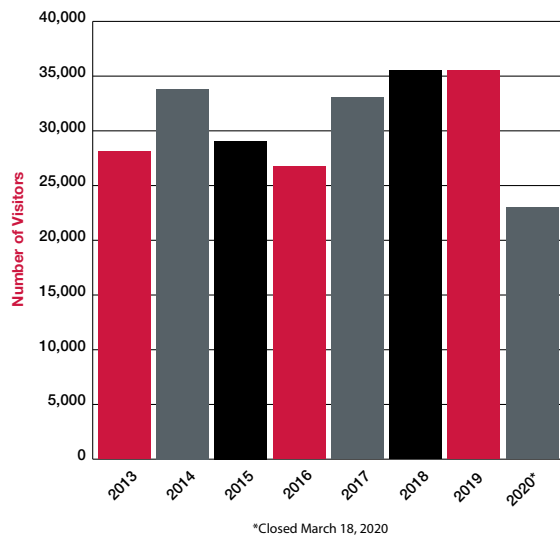
ABOUT THE DAVID OWSLEY MUSEUM OF ART

The **David Owsley Museum of Art (DOMA)** is an 84-year-old university art museum that houses a world art collection with more than 11,000 objects representing civilizations from six of the seven continents. DOMA balances exciting contemporary and historical art exhibitions with engaging displays of the permanent collection in a rich, educational environment that serves both the University and the East Central Indiana region.

MUSEUM ATTENDANCE

The annual museum attendance in FY2020 was 23,134 visits, a number limited by the museum's closure due to the COVID-19 crisis on March 18, 2020. At that point, in the middle of the busy spring season, attendance was ahead of previous years. Under normal circumstances, FY2020 attendance may have surpassed previous records.

Total Museum Attendance

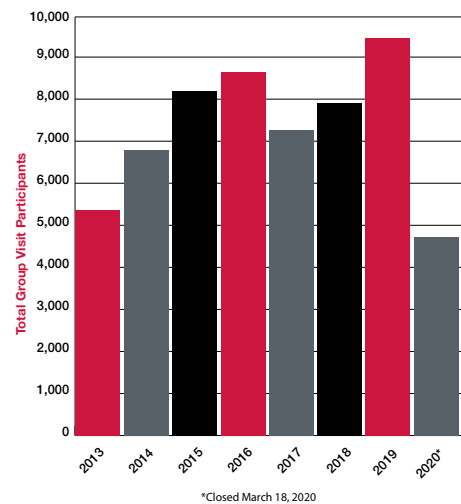


EDUCATION AND OUTREACH

DOMA fulfills its educational mission by embracing both a local campus audience as well as K-12 students and lifelong learners throughout the region. One measure of educational impact includes preregistered group tours and class visits, both those guided by DOMA staff and docents or led by Ball State University professors, external educators, and community members. These organized visits represent a growing number of people engaged in direct encounters with works of art in the galleries.

The COVID crisis and museum's closure in March limited the overall number of preregistered tours to 179 groups with 4,745 visitors, which is about two-thirds the number of groups and about one-half the visitor count as the previous year.

Preregistered Group Tour Visitors



Group visits can be further divided into two main types, those by Ball State University students and visits by public, private, and homeschooled K-12 groups. Other public audiences round out the total number of preregistered groups.



BALL STATE UNIVERSITY STUDENTS

Despite the museum's closure and the cancellation of its spring events, Ball State students still visited the museum with their classes more than 2,700 times in FY2020. More than 100 preregistered groups from 60 different courses utilized the world art collection for their coursework in fields as diverse as anthropology, economics, English, history, journalism, philosophy, Spanish, telecommunications, and many others. Naturally, the largest number of class visits came from Ball State's College of Fine Arts, particularly the School of Art; nearly half that many visited from the Honors College, as well as large groups from the College of Sciences and the Humanities, such as the departments of English, Modern Languages and Classics, and Environment, Geology, and Natural Resources.



Miller College of Business

5 Courses
155 Student Visits



Estopinal College of Architecture and Planning

4 Courses
85 Student Visits



College of Fine Arts



33 Courses
1,122 Student Visits

College of Communication, Information, and Media

2 Courses
22 Student Visits



BALL STATE STUDENT VISITS BY COLLEGE

College of Sciences and Humanities

39 Courses
797 Student Visits



Teachers College

2 Courses
64 Student Visits



Honors College

20 Courses
523 Student Visits



Other (University Affiliated)



1 Course
7 Student Visits

BALL STATE COURSE VISITS

ACR 231 Introduction to Glass
AFA 101 Drawing Studio
AFA 211 Painting 1
AFA 217 Painting: Watercolor
AFA 361 Printmaking: Relief 1
AHS 100 Introduction to Art History
AHS 201 Art Criticism and Meaning
AHS 241 Gothic Art
AHS 275 History of Photography
AHS 290 Arts of Asia
ANTH 231 Introduction to Native American Studies
ART 301 Digital Fabrication
CAP 162 Design Communications Media 2
CC 105 Ancient World
CC 202 Cultural Life of Rome
CC 305 Classical Myth & Theory
ECON 201 Principles of Microeconomics
EDPS 250 Human Growth and Development
ENG 103 Rhetoric and Writing
ENG 104 Composing Research
ENG 114 Composing Research (Honors College)
ENG 285 Introduction to Creative Writing

ENG 310 Introduction to Screenwriting
ENG 407 Advanced Fiction Writing
ENG 408 Advanced Poetry Writing
ENG 612 Fiction
ENG 613 Workshop in Poetry Writing
FASH 360 History of Costume
FR 360 Introduction to French Literary Readings
GCM 184 Graphics: Computer Application
GEOG 121 Geography of the Cultural Environment
HIST 150 The West in the World
HIST 151 World Civilization 1
HONR 100 Freshman Seminar
HONR 189 Symposium in Global Studies
HONR 199 Inquiries in Global Studies
HONR 201 Inquiries in the Ancient World
HONR 202 Inquiries in Cultures, 500-1800 c.e.
HONR 202 Inquiries in the Middle Ages, Renaissance, Enlightenment
HONR 203 Inquiries in the Nineteenth, Twentieth, and Twenty-first Centuries
HONR 390 The Renaissance in the Modern World
HOSP 376 Introduction to Event Management
HOSP 262 Facilities Planning, Layout and Design
IDES 105 Introduction to Interior Design

IDES 110 Design Fundamentals
IEI 123 Intensive English Institute: Level 2 Reading
IEI 155 Intensive English Institute: Listening
JOUR 328 Magazine Feature Writing
MATH 391 Teaching and Learning Mathematics in the Elementary School
MUHI 200 Music History
NREM 203 Decision Making in Natural Resource Management
NREM 392 Environmental Interpretation
NREM 477/577 Wilderness and Society
PHIL 100 Introduction to Philosophy
POLS 312 Early Western Political Thought
SP 102 Beginning Spanish 2
TCOM 610 Approaches to Creativity
THEA 250 Directing I
THEA 336 Dance Studio 3



K-12 STUDENTS

In FY2020, 34 K-12 school groups visited the museum with a total of 1,051 students and teachers (including homeschool students), despite the fact that public schools canceled all field trips in mid-March 2020 forward. Nonetheless, 28 schools from districts in eight Indiana counties visited the museum in the first part of the year, with seven schools visiting the museum for the first time.

DOMA also continued its highly successful SMART (School Museum Art Readiness Tour) program in 2019-2020. The SMART program provided curriculum-based tours for nearly every 4th grader in the Muncie Community Schools, amounting to 348 students last year (one school could not visit before the March closure).



School groups came from eight counties (Delaware, Wells, Marion, Henry, Jay, Blackford, Madison, and Grant) for both guided and self-guided visits.

School groups came from eight districts plus two private schools, two charter schools, one alternative high school, and two public schools associated with Ball State University. In addition, there were two preschools and one homeschool group.

1. Burris Laboratory School, Delaware County
2. Indiana Academy, Delaware County
3. East Washington Academy (Muncie), Delaware County
4. Grissom Elementary (Muncie), Delaware County
5. Longfellow Elementary (Muncie), Delaware County
6. Muncie Central High School (Muncie), Delaware County
7. Northside Middle School (Muncie), Delaware County
8. South View Elementary (Muncie), Delaware County
9. Southside Middle School (Muncie), Delaware County
10. West View Elementary (Muncie), Delaware County
11. Wes-Del High School, (Gaston) Delaware County
12. Inspire Academy (charter), Delaware County
13. St. Lawrence Catholic School (private), Delaware County
14. Youth Opportunity Center (alternative school), Delaware County
15. SHARP Homeschool Group, Delaware County*
16. Ross Community Center Preschool, Delaware County*
17. Precious Hearts Development Center (preschool), Delaware County
18. Southern Wells Jr./Sr. High (Southern Wells), Wells County
19. Kipp Indy Prep Middle School (charter), Marion County*
20. Tri Jr./Sr. High School, (South Henry School Corporation), Henry County
21. Westlawn Elementary (Jay School Corporation), Jay County*
22. Redkey Elementary (Jay School Corporation), Jay County
23. Bloomfield Elementary (Jay School Corporation), Jay County*
24. Jay County Christian Academy (Jay School Corporation), Jay County
25. Jay County High School (Jay School Corporation), Jay County
26. Blackford High School (Blackford County Schools), Blackford County
27. Pendleton Heights High School (South Madison Community School), Madison County*
28. Eastbrook South Elementary School (Eastbrook Community Schools), Grant County*

* Seven of the visiting school groups were new to the museum this year and are marked with an asterisk (*).

COMMUNITY ENGAGEMENT

In addition to its utility as an educational tool for Ball State students and faculty, DOMA is a community resource and a point of pride for the city and region. Even though the museum's ambitious plans for the academic year 2019-2020 were cut short, DOMA offered the following for the Muncie community:

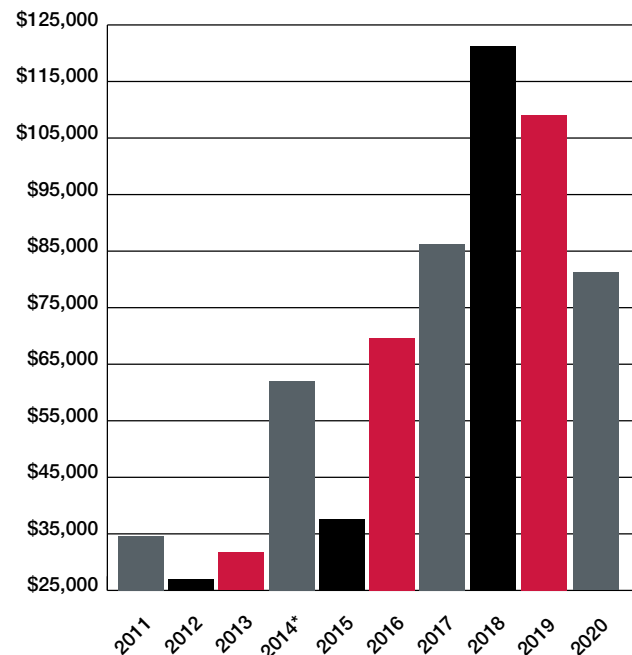
- Open seven days a week, M-F 9-4:30; Sat-Sun 1:30-4:30 (closed to the public from March 18, 2020).
- Free entrance (paid parking on weekdays; free parking on weekends).
- Three public exhibitions.
- Quad Bash: As a focal point of the Quad, the museum was open late with activities and prizes to welcome students at the beginning of the academic year in August 2019.
- Final Fridays: Two PechaKucha nights in fall, 2019, with more than 275 attendees; and one virtual PechaKucha night in June 2020.
- Docent Tours: DOMA enjoys a large and active community of docents, who conduct tours throughout the year, including weekends. In FY2020 a team of 32 volunteer docents (13 Ball State students and 19 community members), contributed 787 volunteer hours supporting lifetime learning at DOMA.
- Wellness Programs: DOMA offered Meditation in the Museum in FY2020—18 sessions (24 planned) with 110 attendees— and Laughter Yoga, two sessions with 24 attendees.



FINANCIAL SNAPSHOT

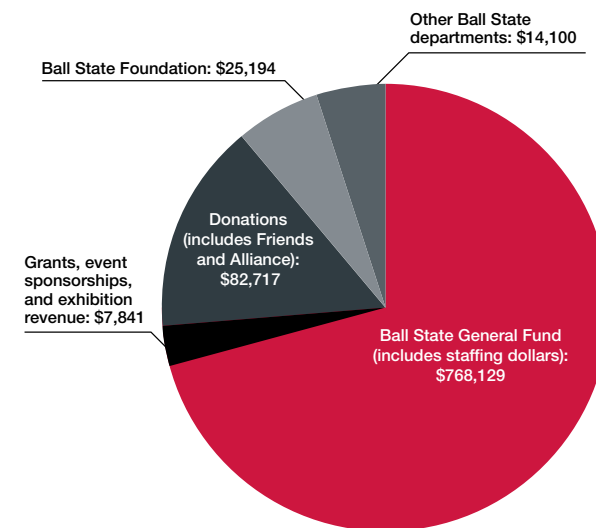
In fiscal year 2019-2020, DOMA's collection received support from several generous contributors, including the establishment of two funds for acquisitions. The cancellation , exhibitions, and programs of Art in Bloom impacted fundraising, but thanks to the museum's Benefactors, Friends, and Art Alliance groups, the museum received more than \$80,000 in cash donations despite its closure in March 2020.

Contributions
(Donations, Gifts, and Fundraising)



*includes donations for 2013 reopening gala

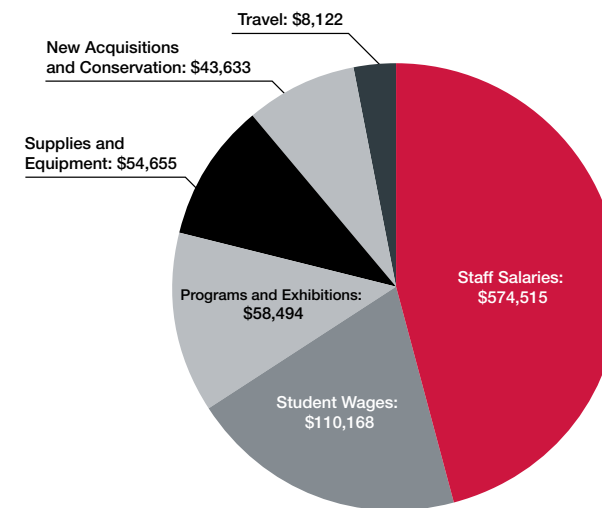
FY2019 Income by Source (\$898,031)*



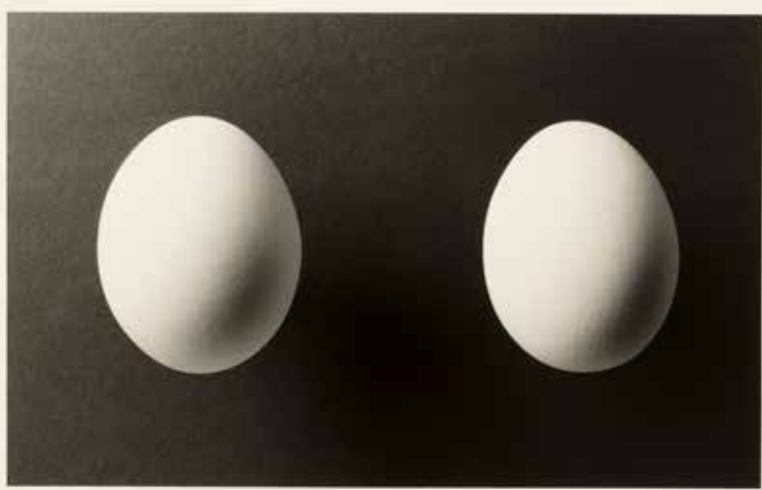
*unaudited

FY2019 Expenses by Type (\$849,587)*

Figures exclude maintenance, utilities, insurance, and overhead paid by Ball State University.



*unaudited



**Recent Acquisitions: Connecting to the Past,
Committing to the Future**

David Owsley Museum of Art, Muncie IN
September 19-December 20, 2019
92 objects acquired from 2017-2019

Kenji Nakahashi, Japanese (1947–2017) Two Eggs, 1984, gelatin silver print, Anonymous gift in memory of Kenji Nakahashi, 2018.021.020 © Center for Creative Photography, Arizona Board of Regents.



Robert Pulley: Orator

David Owsley Museum of Art, Muncie IN
September 19-December 20, 2019
One monumental sculpture displayed in partnership with an exhibition of the artist's work at the Griner Gallery

Robert Pulley, American (born 1948) Orator, 2009, stoneware, Lent by the artist.



Mexican Modernity: 20th Century Paintings from the Zapanta Collection

Cornell Fine Arts Museum, Rollins College, Winter Park, FL
May 23-September 8, 2019
David Owsley Museum of Art, Muncie IN
January 30–May 3, 2020 (closed early due to COVID-19)

38 objects, organized by the Cornell Fine Arts Museum

Diego Rivera, Mexican (1866-1957) Girl with Flowers / Niña con flores, 1954, watercolor on rice paper / acuarela sobre papel de arroz, Collection of Dr. Zapanta / Colección del Dr. Zapanta © 2019 Banco de Mexico Diego Rivera Frida Kahlo Museums Trust, Mexico, D.F. / Artist Rights Society (ARS), New York.



Mexican Modernity: IMPACT

David Owsley Museum of Art, Muncie IN
January 30 May 17, 2020 (closed early due to COVID-19)

24 objects from DOMA's permanent collection, interspersed with three loans from Richmond Art Museum and 20 photographs of Frida Kahlo lent from Throckmorton Fine Art, New York, NY.

Diego Rivera, Mexican (1887-1957), Demonstration, Moscow, November 7, 1927: Masses Marching with Three Foreground Figures, 1927, chalk and watercolor on paperboard, Elisabeth Ball Collection, gift of the George and Frances Ball Foundation 1995.036.050. ©2019 Banco de Mexico Diego Rivera Frida Kahlo Museums Trust, Mexico, D.F./Artist Rights Society.

**EXHIBITIONS
2019-2020**

NOTABLE ACQUISITIONS

NEW ACQUISITIONS AND LOANS TO THE COLLECTION

FY 2020 Acquisitions	
Purchases	11
Gifts	123
FY 2019-2020 Loans to the Collection	16
	Total: 150

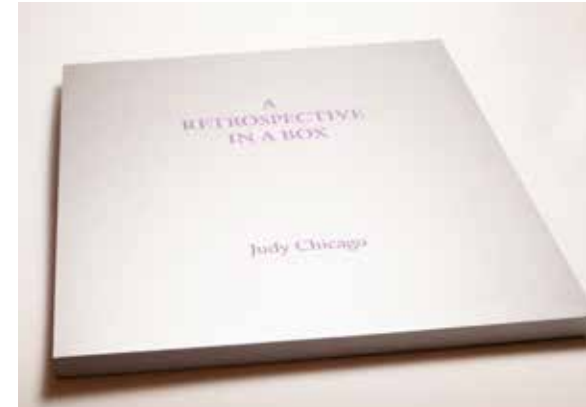


***Convictions I*, 2019**

June Edmonds
 American (born 1959)
 acrylic on canvas
 Purchase: Margaret Ball Petty Fund and the Sharon Seager Women's Art Fund

2020.003.000

© Courtesy of the artist and Luis de Jesus, Los Angeles



***A Retrospective in a Box*, 2008**

Judy Chicago
 American (born 1939)
 suite of seven lithographs, 3/50
 Purchase: Sharon Seager Women's Art Fund

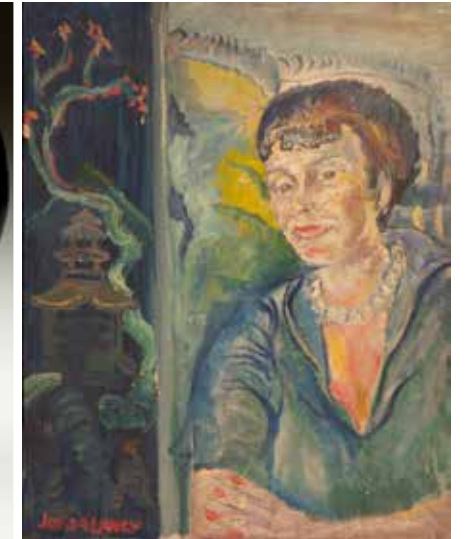
2020.002.001-.007



***Jester*, 1998**

Patricia Nelson
 American (born 1947)
 Silver, composite beads, polyester resin
 Purchase: Margaret Ball Petty Fund

2020.005.000



***Portrait of a Woman*, 1930s**

Joseph Delaney
 American (1904-1991)
 oil on board
 Gift of Charles and Kathleen Harper

2019.029.101

© Estate of Joseph Delaney, Mark K. Williams, Administrator C.T.A.

NOTABLE ACQUISITIONS



Frog Fountain (Frog Baby), 1901

Janet Scudder

American (1869-1940)

bronze

Purchase: Frank C. Ball Collection, gift of the Ball Brothers Foundation, by exchange; and restricted gift of David T. Owsley via the Alconda-Owsley Foundation

2019.025.000



The White Review (La Revue Blanche), 1895

Henri de Toulouse-Lautrec

French (1864-1901)

lithograph

Gift of Gloria Griner

2019.020.000



Tartar Warrior Checking His Horse (Guerrier tartare arrêtant son cheval), about 1850-75

Antoine-Louis Barye

French (1796-1875)

bronze

Gift of Tracey A. Pulvers

2019.023.001



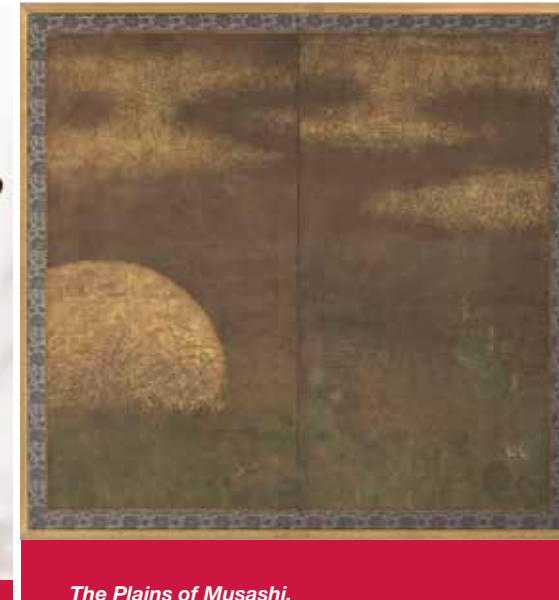
Chippendale-Style Armchair, about 1755-75

New York, United States

mahogany

Gift of David T. Owsley via the Alconda-Owsley Foundation

2019.019.000



The Plains of Musashi, about 1650

Japan, Edo period (1615-1868)

Two panel screen; ink, color, gold and gold leaf on paper

Gift of Suzanne C. McDonough

2019.026.000



The Virgin and Child with the Infant St. John the Baptist, about 1555

Carlo Portelli

Italian (about 1510-1574)

oil on panel

Gift of David T. Owsley via the Alconda-Owsley Foundation

2019.030.000

STUDENT ACHIEVEMENTS AT DOMA FY2020

The museum benefited from the work of 20-30 paid student assistants and interns in 2019-20. Over the course of the year, two graduate students contributed to the museum's daily operations in design and art handling, while dozens of undergraduate student employees served as gallery attendants, visitor assistants, curatorial and research assistants, and education team members.



Liz Young,
design graduate assistant

(in collaboration with the College of
Communication, Information, and Media)



Jack Christeon,
art handling graduate assistant

(in collaboration with the School of Art's
Glick Center for Glass shared with DOMA)



In addition, the generosity of Bona Dillon Press has launched another collaboration between CCIM and DOMA for a graduate student in the digital storytelling program to produce short documentaries. In 2019-2020 two such films were created by Amy Frye: College of Fine Arts promotional feature, and *Making A Difference: The SMART Program at the David Owsley Museum of Art*



STAFF AND VOLUNTEERS 2019–2020

MUSEUM STAFF

Robert La France, Director

Noelle Giuffrida, Assistant
Curator of Asian Art

Rachel Buckmaster,
Assistant Director

Denise Mahoney, Registrar and
Collection Manager

Tania Said, Director of Education

Randy Salway, Exhibition
Designer and Preparator

Cathy Bretz,
Education Coordinator

Shannon Bryan,
Administrative Coordinator

Jordan Huffer, Photographer

STUDENT ASSISTANTS AND INTERNS

Delyla Bell

Molly Carpenter

Faleece Childress

Emma Cieslik

Jack Christeon

Michaela Cox

Noah Dale

Noah Davis-Cheshire

Griffin Green

Emma Hapner

Emily Horn

Jonah James

Samantha Kirchner

Teddy Lepley

Jalynn Madison

Lilly McClung

Summer Moore

Kiya Mullins

Holly Osburn

Bailey Ruble

Sarah Smith

Breyanne Urbin

Liz Young

STUDENT GUARDS AND VISITOR ASSISTANTS

Winry Bartosz

Robert Beal

Bradford Brevard

Sidney Condon

Catherine Cox

Daryl Crum

Marie Dickison

Sophie Edens

Christina Ellett

Kaylee Ferguson

Olivia Henderson

Janee Johnson

Madison Klain

Micaela Knox

Jenny Leben

Logan Lemaster

Adam Lloyd

Nora Martin

Nicolle Murrugarra

Erica O'Connor

Bailey Planton

Clay Reber

Jasmine Romero

Dorothy Schmoz

Abby Specht

Audree Speicher

Andrew Stuber

Mackenzie Summers

Sydney Teare

Bishal Thapa

Austin Whaley

COMMUNITY DOCENTS

Barbara Alvarez Bohanon

Vernon Bedel

Shannon Bryan

Ellen Buchanan

Cristina Castañeda

Sandra Dueker

Margery Frank

Jean Gadziola

Monica James

Sigrid Koehler

Joan Malje

Linda McCaw

Oscar Nuñez

Jim Rhinehart

Richard Ruh

Andrew Seager

Bea Sousa

Janet Stratton

Annemarie Voss

Mark Whitney

Dolores Zage

INDIANA ACADEMY VOLUNTEERS

Catherine Davis

Daya Gao

STUDENT DOCENTS

Austin Bilbrey

Emma Brauer

Natalie Cangiano

Emma Cieslik

Molly Hollcraft

Micaela Knox

Brendan Kogiones

Elizabeth Jolly

Kiya Mullins

Lillian Rogers

Abigail Rosenow

Breyanne Urbin

Ben Wilson

FRIENDS ADVISORY COMMITTEE

Jim Gooden, Chair

Mary Foster, Vice Chair

Sandra McCallister, Secretary

Members at-large:

Ann Johnson

Sigrid Koehler-Wilkins

Karen Moorman

Joe Trimmer

Sue Whitaker

Jeanne Zeigler

Ex officio members:

Rachel Buckmaster,
Assistant Director, DOMA

Seth Beckman, Dean,

College of Fine Arts

Jonathan Jensen, Director of
Development, College of Fine Arts

Robert La France, Director, DOMA

Jan McCune, President,
DOMA Art Alliance

Amanda Runge, Director of
Development, College of Fine Arts

Karen Vincent, Co-President,
Muncie Art Students League

**DAVID
OWSLEY
MUSEUM** OF
ART BALL STATE
UNIVERSITY

bsu.edu/DOMA

The information presented here, correct at the time of publication,
is subject to change. 967346-20 mc



Memorial to the Grandchildren of Queen Victoria, about 1878
Jules Dalou, French (1838-1902)
bronze, cast before 1905
David T. Owsley Collection L2009.009.087